



COPERNICUS SPACE COMPONENT SENTINEL OPTICAL IMAGING
MISSION PERFORMANCE CLUSTER SERVICE

Sen2Cor 2.11.00 Software Release Note

OPT-MPC

Copernicus Sentinel



Optical Mission Performance Cluster

Ref.: OMPC.TPZG.SRN.003
Issue: 1.0
Date: 21/11/2022
Contract: 4000136252/21/I-BG

| | |
|---|---|
| Customer: ESA | Document Ref.: OMPC.TPZG.SRN.003 |
| Contract No.: 4000136252/21/I-BG | Date: 21/11/2022 |
| | Issue: 1.0 |

| | | | |
|------------------------|--|----------------------|--|
| Project: | COPERNICUS SPACE COMPONENT SENTINEL OPTICAL IMAGING MISSION PERFORMANCE CLUSTER SERVICE | | |
| Title: | Sen2Cor 2.11.00 Software Release Note | | |
| Author(s): | Francesco C. Pignatale [TPZG] | | |
| Approved by: | Bodo Werner [TPZG], Project Manager | Authorized by | J. Bruniquel, OPT-MPC Service Manager |
| Distribution: | | | |
| Accepted by ESA | S. Dransfeld, ESA TO | | V. Boccia, ESA Deputy TO |
| Filename | OMPC.TPZG.SRN.003 - i1r0 - Sen2Cor 2.11.00 Software Release Note.docx | | |

Copyright ©2022 – ACRI-ST

All rights reserved.

No part of this work may be disclosed to any third party translated, reproduced, copied or disseminated in any form or by any means except as defined in the contract or with the written permission of ACRI-ST

ACRI-ST

260 route du Pin Montard

06904 Sophia-Antipolis, France

Tel: +33 (0)4 92 96 75 00 Fax: +33 (0)4 92 96 71 17

www.acri-st.fr

Disclaimer

The views expressed herein can in no way be taken to reflect the official opinion of the European Space Agency or the European Union.



Changes Log

| Version | Date | Changes |
|---------|-----------|--|
| 1.0.1 | June 2014 | Initial Delivery |
| 2.0.3 | May 2015 | First Maintenance Patch |
| 2.0.4 | Oct. 2015 | Urgent fix for correcting the scaling problem on the Level 2A output files |
| 2.0.5 | Nov. 2015 | Fix for calibration problem between 60/20 and 10 m resolutions |
| 2.0.6 | Dec. 2015 | Fix corrupted version of windows openjp2.dll Added correction parameter for sun-earth distance |
| 2.1.0 | Feb. 2016 | Parallel processing on tile base |
| 2.2.1 | Apr. 2016 | Integration of Look Up Tables for Summer / Winter /Rural / Water atmospheric conditions, automated ozone determination, automated aerosol / atmosphere detection, improved up- and down sampling routines, new scene classification, selection of planet DEM |
| 2.3.0 | Nov. 2016 | Support of PSD 14.2 in parallel to PSD 13.1 and corrective maintenance fixes as specified |
| 2.3.1 | Feb. 2017 | Maintenance fixes as specified |
| 2.3.1 | Feb. 2017 | Added list of known issues |
| 2.3.1 | Feb. 2017 | Added list of planned evolutionary upgrades |
| 2.4.0 | Jun. 2017 | Upgrade of Configuration Parameters according to CCN.1 |
| 2.4.0 | Jun. 2017 | Maintenance fixes as specified |
| 2.4.0 | Jun. 2017 | Updated list of planned evolutionary upgrades |
| 2.4.0 | Jun. 2017 | Provision of new stand alone installers (Independent of Anaconda, Beta Release) |
| 2.5.0 | Nov. 2017 | New Product Specification 14.3 implemented |
| 2.5.0 | Nov. 2017 | New PSD design for integration into PDGS |
| 2.5.0 | Nov. 2017 | Improvement of Scene Classification |
| 2.5.0 | Nov. 2017 | Improvement of Cirrus Correction |
| 2.5.0 | Nov. 2017 | Evolutionary upgrades as specified |
| 2.5.0 | Nov. 2017 | Maintenance fixes as specified |
| 2.6.0 | Feb. 2018 | Implemented items for Phase II as described for section 3.1.1 |
| 2.5.5 | Feb. 2018 | Maintenance fixes as specified |
| 2.6.1 | Feb. 2018 | Evolutionary upgrades as specified |

| | | |
|---------|-----------|--|
| 2.6.1 | Feb. 2018 | Maintenance fixes as specified, merge with 2.5.5 |
| 2.6.1 | Feb. 2018 | Removed sections on Anaconda installation as no longer of relevance |
| 2.6.1 | Feb. 2018 | Added comments and changes after review |
| 2.6.2 | Mar. 2018 | Implemented updates and fixes according to 2.6.2 |
| 2.6.3 | Apr. 2018 | Implemented updates and fixes according to 2.6.3 |
| 2.6.4/5 | Jun. 2018 | Implemented updates and fixes according to 2.6.4/5 |
| 2.6.6 | Sep. 2018 | Implemented updates and fixes according to 2.6.6 |
| 2.7.0 | Oct. 2018 | Implemented updates and fixes according to 2.7.0 |
| 2.7.1 | Nov. 2018 | Implemented updates and fixes according to 2.7.1 |
| 2.7.2 | Dec. 2018 | New section for Toolbox Users written |
| 2.8.0 | Jan. 2019 | Added fixes |
| 2.9.0 | Jun. 2020 | Maintenance Fixes and Evolutionary Upgrades |
| 2.9.0 | Nov. 2020 | Upgrading to PSD-14.6 |
| 2.10.0 | Dec. 2021 | Upgrading to PSD-14.9 and Evolutionary Upgrades as listed |
| 2.10.02 | Mar. 2022 | Corrective and Perfective maintenance, handling of Copernicus DEM 30m. Linux Installer |
| 2.10.03 | Sep. 2022 | PS, S2RS. Corrective maintenance. Linux Installer |
| 2.11.0 | Nov. 2022 | Sen2Cor Stand-Alone Version. Linux and Windows Installer |

List of Changes

| Version | Section | Answers to RID | Changes |
|---------|---------|----------------|---------|
| | | | |
| | | | |
| | | | |
| | | | |
| | | | |
| | | | |
| | | | |

OPT-MPC



Optical MPC

Sen2Cor 2.11.00 Software Release Note

Ref.: OMPC.TPZG.SRN.003

Issue: 1.0

Date: 21/11/2022

Page: v

Table of content

| | | |
|----------|--|-----------|
| 1 | INTRODUCTION | 1 |
| 1.1 | PURPOSE OF THE DOCUMENT | 1 |
| 1.2 | DOCUMENT STRUCTURE..... | 1 |
| 1.3 | REFERENCES | 1 |
| 2 | SOFTWARE RELEASE OVERVIEW | 2 |
| 2.1 | DELIVERY LIST | 2 |
| 3 | STATUS OF THE SOFTWARE CONFIGURATION ITEM..... | 3 |
| 3.1 | EVOLUTION HISTORY | 3 |
| 3.1.1 | <i>Release 2.11.00 (Stand-Alone. Linux and Windows Package).....</i> | <i>3</i> |
| 3.1.2 | <i>Release 2.10.03 (PS, S2SR, Linux Package).....</i> | <i>4</i> |
| 3.1.3 | <i>Release 2.10.02 (S2RS, Linux Package).....</i> | <i>4</i> |
| 3.1.4 | <i>Evolution since release 2.9.0.....</i> | <i>5</i> |
| 3.1.5 | <i>Evolution since release 2.8.0.....</i> | <i>7</i> |
| 3.1.6 | <i>Evolution since release 2.5.5 for Sen2Cor Stand Alone Version (Toolbox Mode).....</i> | <i>10</i> |
| 3.1.7 | <i>Evolutions since release 2.7.2.....</i> | <i>18</i> |
| 3.1.8 | <i>Evolution since release 2.7.1.....</i> | <i>19</i> |
| 3.1.9 | <i>Evolution since release 2.7.0.....</i> | <i>19</i> |
| 3.1.10 | <i>Evolution since release 2.6.6.....</i> | <i>20</i> |
| 3.1.11 | <i>Evolution since release 2.6.5.....</i> | <i>26</i> |
| 3.1.12 | <i>Evolution since release 2.6.3.....</i> | <i>28</i> |
| 3.1.13 | <i>Evolution since release 2.6.2.....</i> | <i>30</i> |
| 3.1.14 | <i>Evolution since release 2.6.1.....</i> | <i>31</i> |
| 3.1.15 | <i>Evolution since release 2.6.0.....</i> | <i>32</i> |
| 3.1.16 | <i>Evolution since release 2.5.5.....</i> | <i>33</i> |
| 3.1.17 | <i>Evolution since release 2.5.0.....</i> | <i>37</i> |
| 3.1.18 | <i>Evolution since release 2.4.0.....</i> | <i>38</i> |
| 3.1.19 | <i>Evolution since release 2.3.1.....</i> | <i>41</i> |
| 3.1.20 | <i>Evolution since release 2.3.0.....</i> | <i>43</i> |
| 3.1.21 | <i>Evolution since release 2.2.1.....</i> | <i>45</i> |
| 3.1.22 | <i>Evolution since release 2.1.0.....</i> | <i>50</i> |
| 3.1.23 | <i>Evolution since release 2.0.6.....</i> | <i>51</i> |
| 3.1.24 | <i>Evolution since release 2.0.5.....</i> | <i>55</i> |
| 3.1.25 | <i>Evolution since release 2.0.4.....</i> | <i>55</i> |
| 3.1.26 | <i>Evolution since release 2.0.3.....</i> | <i>56</i> |
| 3.1.27 | <i>Evolution since release 1.0.1.....</i> | <i>57</i> |
| 3.2 | LIST OF KNOWN ISSUES..... | 60 |
| 4 | INSTALLATION AND SETUP..... | 61 |
| 4.1 | STAND-ALONE INSTALLERS (SINCE RELEASE 2.4.0)..... | 61 |
| 5 | COPYRIGHT NOTES..... | 65 |

OPT-MPC



Optical MPC

Sen2Cor 2.11.00 Software Release Note

Ref.: OMPC.TPZG.SRN.003

Issue: 1.0

Date: 21/11/2022


Page: vii

List of Figures

| | |
|--|----|
| Figure 1 – Database size and read access time vs. compression level----- | 12 |
| Figure 2 – Performance improvement using OpenJPEG 2.3 and multithreading ----- | 14 |
| Figure 3 – Improvement of no data mask.----- | 15 |
| Figure 4 – Excluding terrain correction for clouds----- | 16 |
| Figure 5 – Changes in the peak-to-peak values between different tiles ----- | 17 |
| Figure 6 – Excluding terrain correction for clouds----- | 25 |
| Figure 7 – Database size and read access time vs. compression level----- | 27 |
| Figure 8 – Improvement of no data mask.----- | 30 |

List of Tables

| | |
|--|----|
| Table 1 – Reference Documents ----- | 1 |
| Table 2 – Database size and access time dependent for selected compression level ----- | 11 |
| Table 3 – Database size and access time dependent for selected compression level ----- | 27 |

| | | |
|---|---|---|
|  | <p>Optical MPC</p> <p>Sen2Cor 2.11.00 Software Release Note</p> | <p>Ref.: OMPC.TPZG.SRN.003</p> <p>Issue: 1.0</p> <p>Date: 21/11/2022</p> <p>Page: 1</p> |
|---|---|---|

1 Introduction

1.1 Purpose of the document

This document is produced in the context of the Optical Mission Performance Cluster (OMPC) maintenance and evolution. Its purpose is to document the performed corrective and perfective maintenance and evolutionary upgrades applied to the Sentinel 2 Level-2A processor software named Sen2Cor and its installation and environment settings.

1.2 Document structure

Chapter 1 provides the introduction, describing the scope and structure of the document, and a list of applicable reference documents.

Chapter 2 describes the scope of the current release and the content of the delivery.

Chapter 3 gives an overview on the history of the evolution and applied fixes for each release in a downward order.

Chapter 4 gives an introduction how to install and configure the software and its environment.


Chapter 5 lists the Copyright Notes.

1.3 References

The following Table 1 lists the documents with a direct bearing on the content of this release note.

Table 1 – Reference Documents

| Document ID | Description | Version |
|----------------------|---|---------------|
| S2-PDGS-MPC-L2A-PFS | Sentinel-2 MSI – Level 2A Product Format Specification | 14.6, 14.9 |
| S2-PDGS-MPC-L2A-PDD | Sentinel-2 MSI – Level 2A Product Definition Document | 14.6, 14.9 |
| OMPC-TPZG-IOD-001 | Sentinel-2 MSI – Level 2A Prototype Processor Input-Output Data Definition Document | 2.11 |
| OMPC-TPZG-SUM-001 | Sentinel-2 MSI – Level 2A Prototype Processor Installation and User Manual | 2.11 |
| S2-PDGS-MPC-L2A-ATBD | Sentinel-2 MSI - Level 2A Products, Algorithm Theoretical Basis Document | 2.10 |
| S2-PDD | GMES Space Component – Sentinel-2 Payload Data Ground Segment (PDGS), Product Definition Document | 14.9_4.9 |


| | | |
|---|---|---|
|  <p>OPT-MPC Optical Mission Performance Cluster</p> | <p>Optical MPC</p> <p>Sen2Cor 2.11.00 Software Release Note</p> | <p>Ref.: OMPC.TPZG.SRN.003 Issue: 1.0 Date: 21/11/2022 Page: 2</p> |
|---|---|---|

2 Software release overview

This release of Sen2Cor (2.11) provides the Linux and Windows installers of the software Sen2Cor version 2.11. This version supports PSDs 14.6 and 14.9. It includes corrective maintenance. This delivery is intended to for the Stand-Alone (Toolbox) version.

2.1 Delivery List

| Delivery number | Description |
|-----------------|---|
| D1 | Processor Software [Sen2Cor-V2.11.00] Installer for Linux and Windows |
| D2 | This Software Release Note [OMPC-TPZG-SRN-003] |
| D3 | Input-Output Data Definition Document [OMPC-TPZG-IOD-001] |
| D4 | Software Configuration and User Manual [OMPC-TPZG-SUM-001] |

| | | |
|---|---|---|
|  | <p>Optical MPC</p> <p>Sen2Cor 2.11.00 Software Release Note</p> | <p>Ref.: OMPC.TPZG.SRN.003 Issue: 1.0 Date: 21/11/2022 Page: 3</p> |
|---|---|---|

3 Status of the software configuration item

3.1 Evolution History

3.1.1 Release 2.11.00 (Stand-Alone. Linux and Windows Package)

3.1.1.1 Software Installation

The installation itself is equivalent to the previous release. This is detailed in Chapter 4.

3.1.1.2 Evolutionary Updates

Sen2Cor 2.11 fully supports the use of Copernicus DEM. See [OMPC-TPZG-SUM-001]

3.1.1.3 Corrective and Perfective Maintenance

This version contains the following optimisation, corrective and perfective maintenance.


3.1.1.3.1 Corrective Maintenance for the Stand-Alone Version (Toolbox).

For the Stand-Alone (Toolbox) version of Sen2Cor for public release the following optimisation and corrective maintenance has been performed:

- ❖ Corrected a regression error on exporting for the Water Vapour (WVP) band at 10 m ;
- ❖ Updated the computation of the no-data pixel percentage when Region-Of-Interest (ROI) is used to consider the full Sentinel-2 tile ;
- ❖ Updated the importing procedure of Copernicus DEM to be in line with the operational Production Service (PS) ;
- ❖ Updated the procedure of exporting SCL in Cloud Optimized GeoTIFF format (COG) ;
- ❖ Updated the no-data handling when exporting Digital Elevation Model data (DEM).

This version also contains the corrective and perfective maintenances for the Stand-Alone Version that were implemented within the release of Sen2Cor 2.10.03 for Processing Service (PS) and the Sentinel-2 Re-processing Service (S2RS). These are listed a second time here below for completeness:

- ❖ Handling of products < 14.6 ;
- ❖ Updated the exporting in Tif format when --tif is selected ;
- ❖ Handling fixed visibility if selected in L2A_GIPP.xml ;
- ❖ Exporting empty wvp band and setting its default value in the L2A_Quality report if WV_correction is set to 0 in the L2A_GIPP.xml

| | | |
|---|---|---|
|  | <p>Optical MPC</p> <p>Sen2Cor 2.11.00 Software Release Note</p> | <p>Ref.: OMPC.TPZG.SRN.003 Issue: 1.0 Date: 21/11/2022 Page: 4</p> |
|---|---|---|

3.1.1.4 Configuration Changes

No configuration changes are present in this release.

3.1.2 Release 2.10.03 (PS, S2SR, Linux Package)

3.1.2.1 Software Installation

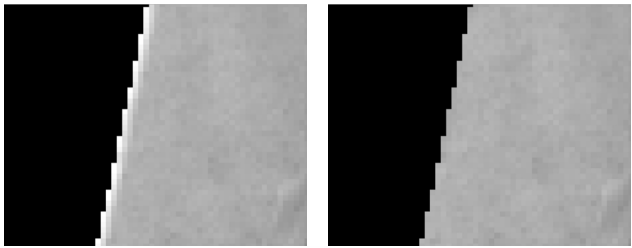
The installation itself is equivalent to the previous release 2.10.02. This is described in Chapter 4.

3.1.2.2 Evolutionary Updates

No evolutionary updates in this release.

3.1.2.3 Corrective and Perfective Maintenance

This Section lists all the main corrective maintenance since the release 2.10.02.

| Issue # | Description | Type |
|----------------------------|--|------------|
| OMPC-268 PDGSANOM-11122 | Adding B05 in the BOA negative pixels list in the L2A_Quality.xml | Corrective |
| OMPC-268 PDGSANOM-11123 | Fixing the bright border of the swath when DTED-30 is used  Left: before, right: after fix | Corrective |

3.1.2.3.1 Corrective Maintenance for the Standalone Version (Toolbox).

For the Stand-Alone (Toolbox) version of Sen2Cor the following optimisation and corrective maintenance has been performed: (i) handling of products < 14.6, (ii) exporting Tif images when --tif is selected, (iii) handling fixed visibility if selected in L2A_GIPP.xml, (iv) exporting empty wvp band and setting its default value in the L2A_Quality report if WV_correction is set to 0 in the L2A_GIPP.xml.


3.1.2.4 Configuration Changes

No configuration changes are present in this release.

3.1.3 Release 2.10.02 (S2RS, Linux Package)

3.1.3.1 Software Installation

The installation itself is equivalent to the previous version. This is described in Chapter 4.

| | | |
|---|---|---|
|  | <p>Optical MPC</p> <p>Sen2Cor 2.11.00 Software Release Note</p> | <p>Ref.: OMPC.TPZG.SRN.003 Issue: 1.0 Date: 21/11/2022 Page: 5</p> |
|---|---|---|

3.1.3.2 Evolutionary Updates

Handling of Copernicus Digital Elevation Model at 30 meters resolution.

3.1.3.3 Corrective and Perfective Maintenance

This Section lists all the corrective maintenance since the release 2.10.01

| Issue # | Description | Type |
|-------------|---|------------|
| SCOR-55 | Sen2Cor is more robust to data loss quality mask (L1C) anomalies | Perfective |
| SCOR-57 | Correct the handling of tiles with extremely high solar zenith angles | Corrective |
| SIIMPC-1765 | Correct the occurrence of halo effect in the 10m band when flat profile | Corrective |
| SIIMPC-1802 | Correct the handling of special case where L1C DN = 1000 | Corrective |
| SIIMPC-1803 | Correct the possible occurrence of L2A surface reflectance overflow | Corrective |
| SIIMPC-1807 | Improve the quality of the L2 water vapour layer (borders) | Perfective |
| OMPC-94 | Investigation to improve datastrip homogeneity | Perfective |
| OMPC-100 | Cloud shadow commission error for tile with very few land pixels | Corrective |

3.1.3.4 Configuration Changes

No configuration changes are present in this release.

3.1.4 Evolution since release 2.9.0

3.1.4.1 Software Installation

The installation itself is equivalent to the previous version and it is described in the Chapter 4. The content of this chapter has been updated to reflect this release.

3.1.4.2 Evolutionary Updates


This Section lists all the evolutionary changes since the release 2.9.0:

- ❖ Adaptation of Sen2Cor to the L1C evolutions: this comprises the
 - Support of L1C radiometric bias offset;
 - Support of the CAMS auxiliary data in the L1C products;
 - Support of the L1C quality masks in the raster format;
 - Support of the L1C inclusion of the Snow/Ice mask;
 - Support of the addition of the new ECMWF auxiliary data in the L1C product.
- ❖ Negative radiometric value: In order to better handle the atmospheric correction of very dark surface that could lead to radiometric negative reflectance, a radiometric offset is introduced and

handled. This is band dependent and it is read from the new set of parameters present in the L1C DS metadata.

- ❖ Redefinition of the topographic shadow and cast shadow: a ray-tracing algorithm has been implemented to improve the topographic shadow and cast shadows classification accuracy. These shadows are the class 2 of SCL map. Other dark features are now classified in other classes that can be water, not-vegetated, vegetation, unclassified.
- ❖ Improvement of the bright target reprocessing in the coastal area: a new method to improve the discrimination and classification of bright area has been implemented. This uses a dilation of the urban class when the decision mask is then applied to select the urban pixels that goes in the Sen2Cor special processing.
- ❖ Addition of a Digital Object Identifier (DOI) in the L2A_GIPP configuration file: an url can be inserted in the Sen2Cor L2A_GIPP configuration file under the name 'product doi' and it can be read during the datastrip generation and updated in the L2A datastrip and L2A user product metadata.
- ❖ Provision of Band_01 also at 20 m resolution: the Band_01 at the 20 m resolution is added in the associated image folder.
- ❖ Addition of L2A Quality parameters in the tile metadata: additional quality parameters have been added to the already existing parameter in the L2A tile metadata in the 'Quality_Indicator_Info' section. These include:
 - Cloudy_pixel_over_land_percentage;
 - AOT_retrieval_method;
 - Granule_mean_AOT;
 - Granule_mean_wv;
 - Ozone_Source;
 - Ozone_Value.
- ❖ Provision of the L2A Quality Report: the new L2A_Quality.xml report provides quality indicators information derived during the L2A process. They are separated in three main groups (that are subsequently divided into several subsections):
 - Scene Class Quality Indicators;
 - Atmospheric Correction Quality Indicators;
 - Auxiliary Data Quality indicators.
- ❖ SCL improvement: Improved the accuracy of the scene classification map by introducing an 'evolution' version of the scene classification. This includes an update of several algorithms in order to handle the improvement of the topographic/cast shadow, reduce false snow detection, inclusion of cloud/shadow dilation, usage of S2 MSI parallax properties to mitigate false cloud and false snow detection, and replacement of ESA CCI Snow condition with an ESA CCI derived snow monthlyclimatology.

The additional tar file with the derived snow monthly climatology shall be extracted at the following location of Sen2Cor installation: '\$SEN2COR_BIN/aux_data', like for other ESA CCI

| | | |
|---|---|---|
|  | <p>Optical MPC</p> <p>Sen2Cor 2.11.00 Software Release Note</p> | <p>Ref.: OMPC.TPZG.SRN.003 Issue: 1.0 Date: 21/11/2022 Page: 7</p> |
|---|---|---|

layers.

The tar file **ESACCI-LC-L4-Snow-Cond-500m-MONTHLY-2000-2012-v2.4.tar** is available here:

<https://earth.esa.int/eogateway/ftp/Sentinel-2/ESACCI-LC-L4-ALL-FOR-SEN2COR-2.10.tar.gz>

- ❖ Note: the previous scene classification can be called by using the command `--sc_classic`.
- ❖ Support of the Copernicus DEM: Support of the Copernicus DEM is now included. DEM are retrieved from a dedicated URL **that will be provided with a dedicated news on the STEP. This document will be updated following the news.**
- ❖ Support of COG for the SCL classification output (optional).

3.1.4.3 Corrective Maintenance

--

3.1.4.4 Configuration Changes

The following parameters have been added (or modified) to the Configuration file **L2A_GIPP.xml** for this release. In details:

- ❖ Product DOI: that contains the url pointing to the Digital Object Identifier;
- ❖ Handle_L1C_QLT_MASK: it switches on/off the handling of the L1C quality mask in raster format;
- ❖ PSD_Version: special entry for forcing a special PSD version (default value: DEFAULT);
- ❖ PSD_scheme: added for 14.9;

Starting from PSD 14.9, L2A metadata allows the tracing of the OZONE source (e.g. config in L2A_GIPP or retrieved from ECMWF auxiliary file)

In **L2A_CAL_SC_GIPP.xml**, the reference to the updated snow monthly climatology has been updated:

```
<ESACCI_SnowCondition_Map_Dir>ESACCI-LC-L4-Snow-Cond-500m-MONTHLY-2000-2012-v2.4</ESACCI_SnowCondition_Map_Dir>
```

3.1.5 Evolution since release 2.8.0


3.1.5.1 Software Installation

The installation itself is equivalent to the previous Version 2.8 and is described in Chapter 4.

3.1.5.2 Evolutionary Updates

This section lists all evolutionary changes since release 2.8.0:

- ❖ Support of new Copernicus 90m Digital Elevation Model (SIIMPC-1613): the Copernicus 90m DEM can be used instead of the PlanetDEM, providing that the filenames and the file structure are equivalent to the PlanetDEM. It is in the responsibility of the user to adapt this (see corresponding

| | | |
|---|---|---|
|  | <p>Optical MPC</p> <p>Sen2Cor 2.11.00 Software Release Note</p> | <p>Ref.: OMPC.TPZG.SRN.003 Issue: 1.0 Date: 21/11/2022 Page: 8</p> |
|---|---|---|


section of the User Manual). For tiles over water, where according data of the Copernicus DEM might be not available, the missing values of the DEM input are set to 0.

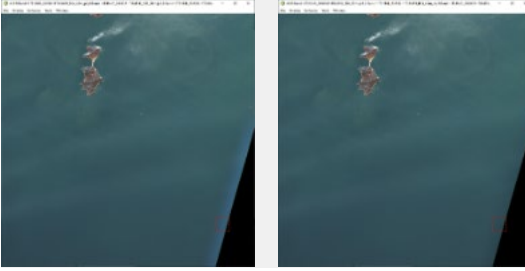
- ❖ Improvement of processing time by automatic detection of the region of interest (SIIMPC-1614): a new option can be configured which shrinks the processing only to those rectangular areas of a tile which contains foreground pixels. For full tiles, this detection is switched off and a standard processing takes place. Details on this feature are given in the User Manual.
- ❖ Manual configuration of an area of interest for processing (SIIMPC-1418): it is now possible to determine an area of interest via configuration. Processing will only take place in this rectangle specified by the user and can improve the processing speed drastically. Details on this feature are given in the User Manual and in the configuration changes below.
- ❖ Replacement of gdal shell commands with gdal python API (SIIMPC-1525): Sen2Cor makes excessive use of the gdal tools for adapting the Digital Elevation Models (DEMs) to the sizes and resolutions of the images to be processed. Up to release 2.8, this was performed via calling the gdal tools via a system call. This could lead to problems, if the path to the gdal tools have been overwritten by an external configuration. Therefore, these command-line oriented calls are now replaced by the corresponding direct function calls of the gdal python API.

3.1.5.3 Corrective Maintenance

The following fixes have been applied to Sen2Cor since release 2.8.0:

| Issue # | Description |
|-------------|---|
| SIIMPC-1392 | The NO_DATA mask as obtained from the scene classification has been applied to the snow and cloud probability images to avoid artefacts observed at the border of the foreground pixels /background pixels. |
| SIIMPC-1461 | A competitive write error on the Datastrip metadata has been fixed. |
| SIIMPC-1475 | Fixes a DEM configuration issue in the PDGS mode with no impact for the Toolbox user mode. |
| SIIMPC-1485 | Shadow pixels will now be excluded from the clear scene and will not go into the mean calculation of the visibility. This improves the visibility calculation, especially if huge areas of shadow pixels are present. |
| SIIMPC-1504 | Corrected Sentinel 2 Level 2 Product Definition – Units. Updated document S2-PDGS-MPC-L2A-PDD-V14.6-v4.8.pdf is part of this release. |
| SIIMPC-1506 | For height values above 2500m an extrapolation routine was called, but the results of the extrapolation had not been propagated. The applied fix improves the visibility calculation for higher altitudes. |
| SIIMPC-1507 | If in the L2A_GIPP the generation of the TCI was deactivated, but the resampling of the 60m from 20m was activated, the processing of the 10m bands failed, as in the 60m band resampling it was not checked, whether a TCI for 20m exists. |
| SIIMPC-1520 | Corrects a misbehaviour when a Level 1C tile metadata input has been generated with a sensing start date format with no milliseconds. |

| | | |
|---|---|---|
|  | <p>Optical MPC</p> <p>Sen2Cor 2.11.00 Software Release Note</p> | <p>Ref.: OMPC.TPZG.SRN.003 Issue: 1.0 Date: 21/11/2022 Page: 9</p> |
|---|---|---|


| | |
|-------------|--|
| SIIMPC-1541 | Some old products in the SciHub archive contained a datastrip metadata xml file with a missing <Spectral_Information_List> which led to a runtime error when processed. A workaround has been implemented to overcome this issue. |
| SIIMPC-1553 | Fixes an issue with a version dependency on the data-strip generation in the PDGS mode. No impact for the Toolbox user mode. |
| SIIMPC-1569 | <p>Fixes an halo artefact around image boundaries caused by a smoothing windows that did not take into account the swath edge of end of a datastrip in their different input data.</p>  |
| SIIMPC-1585 | Under certain conditions a variable (thr_neg) in the atmospheric correction could be called without being initialized, which led to a runtime error. |
| SIIMPC-1587 | If a L1C Product is fully write-protected, the permission was inherited to the generated L2A product and led to a runtime error. Permission is now updated correctly. |
| SIIMPC-1606 | If the TIF option was checked for the generation of outputs, no preview file was generated, due to a restriction in the metadata scheme. |
| SIIMPC-1608 | A configurable switch was added to force a termination of the processing if an issue with a DEM download occurred. The default behavior is, that the processor continues processing without DEM. |

3.1.5.4 Configuration Changes

The following parameters have been added to the Configuration file **L2A_GIPP.xml** for this release. It is advised to compare the L2A_GIPP.xml from version 2.8 with the recent one and to align to the new version, if individual changes have been performed. The following parameters have been added in detail:

- ❖ **Region_Of_Interest:** this defines a configurable rectangle around a midpoint coordinate, which is defined by the **row0** and **col0** parameters, and the size of the rectangle defined by the **nrow_win** and **ncol_win** parameters around the midpoint. The values are always expected to be configured within a whole frame of 10980 x 10980 pixels. This corresponds to a full tile at 10m resolution. The sizes need not to be identical, but all given values **must** be integer divisible by six, in order to prevent rounding errors for the lower resolutions of 20m and 60m.

Apart from this user configurable rectangle, two more options can be selected: if **row0** and **col0** are set **AUTO** the area of interest is detected automatically: this is given by the min and max rows

| | | |
|---|---|--|
|  | <p>Optical MPC</p> <p>Sen2Cor 2.11.00 Software Release Note</p> | <p>Ref.: OMPC.TPZG.SRN.003 Issue: 1.0 Date: 21/11/2022 Page: 10</p> |
|---|---|--|

and columns, where a non-background pixel can be found and will reduce processing time, as the rectangular areas containing only background pixels are not included in the processing. If row0 and col0 are set to **OFF**, the standard processing will take place. Also, if the processing mode is set to AUTO, and a full tile is detected, the processing is switched to the standard mode. If AUTO or OFF is selected, the values for nrow_win and ncol_win are ignored.

- ❖ **Force_Exit_On_DEM_Error:** if an error occurs in the downloading of a DEM or if no DEM can be found, the default behaviour of the algorithm is to continue processing with a flat surface instead. If this parameter is set to **TRUE**, the processor will now stop processing instead and exits with an error message. The default configuration is **FALSE**, which leads to the processing behaviour as it was before.

3.1.6 Evolution since release 2.5.5 for Sen2Cor Stand Alone Version (Toolbox Mode)

3.1.6.1 Software Installation

The installation itself is equivalent to the previous Toolbox Version 2.5.5.

3.1.6.2 Evolutionary Updates

This section lists all evolutionary changes since version 2.5.5 in a chronological order:

- ❖ The Usage of Sen2Cor in Toolbox mode supports previous PSD version 14.2 by upgrading the metadata to PSD Version 14.6. Old multiple tile versions (PSD Version 13.1) are no longer supported. A reprocessing of these old 13.1 formats to PSD Version 14.X on the Data Hub Server is however foreseen, so that also very old L1C products can be processed again in the near future.
- ❖ A series of new command line options for the Toolbox mode is present. Users are requested to read section 3.3.2 of the User Manual to get an overview on the new options.
- ❖ Memory and speed optimisations have been performed:
 - Improved RAM consumption is now less than 4 GB;
 - Starting with this version, all bands are only read in once for all resolutions.
 - Since Version 2.8.0, the multithreading features of OpenJPEG 2.3 are supported for speeding up of the reading of the L1C Images.
- ❖ Version 2.8.0 does no longer perform the processing of a 60m resolution by default. If no resolution is specified via command line, only 20m and 10m resolutions are processed. Instead, a down sampling option to 60m resolution can be chosen as a post- processing step for a 20m processing via configuration. This improves the overall performance by about 3 – 5 minutes and leads to equivalent reflectance products for 60 and 20 m resolution (except the resampling effects). The option to perform a 60m down sampling following a 20m processing can be activated via the configuration file L2A_GIPP.xml:

Option: <Downsample_20_to_60>TRUE</Downsample_20_to_60>

If “--resolution=60” is specified via the command line, a 60m resolution processing is however still achievable.

- ❖ The Scene Classification of snow/ice has been improved, enabling the detection of snow above frozen lakes and icebergs in Arctic and Antarctic Sea. This has been done relying less on ESA CCI aux data and relaxing one of the snow thresholds.
- ❖ A new option for the output of images in raw format instead of JPEG-2000 has been implemented, as described in SUM and IOOD. Export for RAW and GeoTiff and aligning output format to L1C input (Kakadu) has been added.
- ❖ Option to disable the terrain Correction using a DEM: It is now possible to decouple the DEM processing as an option or a configuration of the L2A_GIPP.xml. This has been achieved by using the same routines like in flat terrain calculation (dtm_flat) and disabling the terrain iteration, for the terrain corrections, whereas Scene Classification, AOT (and WVP) are still calculated using the DEM input. There is now a new option <DEM_Terrain_Correction> in the L2A_GIPP configuration file, which can be set to TRUE / FALSE (see also Configuration Changes).
- ❖ The size of the internal image database has been made configurable via the configuration file L2A_GIPP.xml. The following measures have been performed:
 - The size of the used 10m JP2 test Image is: 156.6 MB
 - The size of HDF5 database in uncompressed mode is 241.2 MB for storing the single test image above.
 - The database can effectively be decompressed to ~ 160 MB using compression level2 1-4 with an average additional time of 4-6 s for the read of each band. All higher compression levels are not recommended. Default configuration is compression mode 1.

Table 2 – Database size and access time dependent for selected compression level

| Compression Level | DB Size (%) | Read (s) |
|-------------------|-------------|----------|
| 0 | 100 | 0.3 |
| 1 | 68 | 4 |
| 2 | 67 | 5 |
| 3 | 67 | 7 |
| 4 | 66 | 6 |
| 5 | 66 | 9 |
| 6 | 65 | 15 |
| 7 | 65 | 20 |
| 8 | 65 | 57 |
| 9 | 65 | 102 |

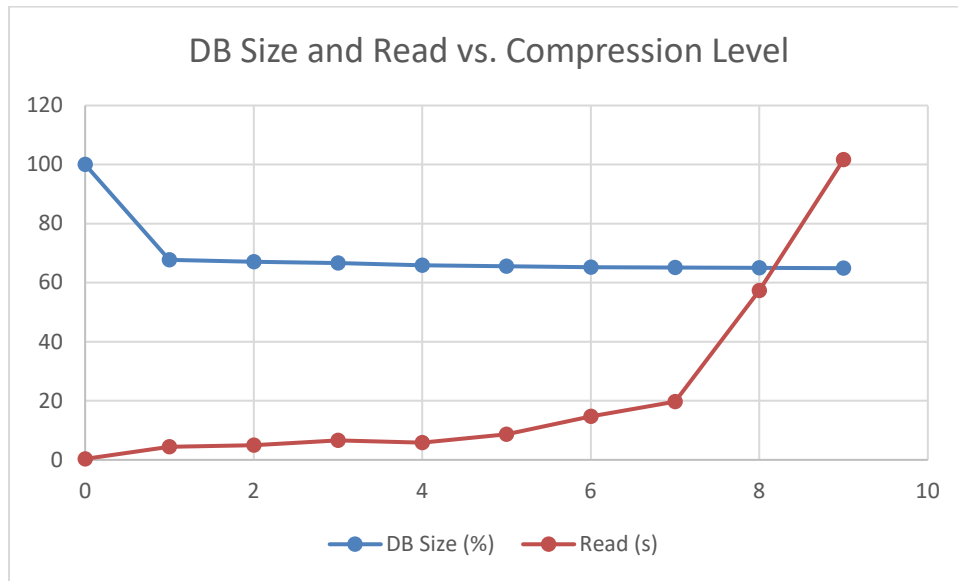


Figure 1 – Database size and read access time vs. compression level

- ❖ Splitting the internal database into 2 entities: Initial need for this optimisation was the fact that the internal database could grow up to > 5 GB and thus was impossible to keep in a RAM disk in the PDGS mode. The following changes have been implemented:
 - In the first processing stage the image database will load only the bands needed for the 20 m processing (except 10 m Band 8). After the 20m processing is performed, all bands (except the three 10m bands 1-3) are removed and Band 8 will be loaded. Thus, the database will keep a size below 1 GB during the whole processing.
 - The temporary database will import all auxiliary data (like the DEMs and ESACCI images). It will additionally store the resampled bands from the image database and the processed products from the 20 m Scene Classification (Classification Map) and Atmospheric correction (AOT/Visibility and Water Vapor). After the 20 m processing is performed, only these products will be up-sampled to 10 m and copied into a new temporary database. The old database with all products no longer needed will be removed.
 - In the 10 m processing the temporary database keeps the AOT/Visibility and Water vapor and imports the new resampled auxiliary data, needed for the 10m processing.
 - The down-sampling routine to 60 m has also improved in that way that the output products will be directly converted to their final format, so that no further storage of these down-sampled products in the database is required.
 - Additionally, all bands which are no longer needed in the processing chain are removed from the temporary database, to free space for other intermediate products.

With this, the following measures have been obtained by operation of a full sized L1C tile with configured DEM, processing for 20 and 10 m and a down-sampling of the 20m product to 60 m.

| Resolution | Image DB | Temp DB |
|---------------------|-----------------------|-----------------------|
| 20 m processing | 739 MB | 1.53 GB |
| Down sampling to 60 | No changes in DB size | No changes in DB size |

| Resolution | Image DB | Temp DB |
|-----------------|----------|----------|
| 10 m processing | 867 MB | 1.963 GB |

- ❖ ESACCI-LC package for Scene Classification: The ESACCI-LC for Sen2Cor data package is prepared for users of Sen2Cor version ≥ 2.5 who want to benefit from the last improvements of Sen2Cor Cloud Screening and Classification module. This auxiliary data information is used in Sen2Cor to improve the accuracy of Sen2Cor classification over water, urban and bare areas and to have a better handling of false detection of snow pixels.

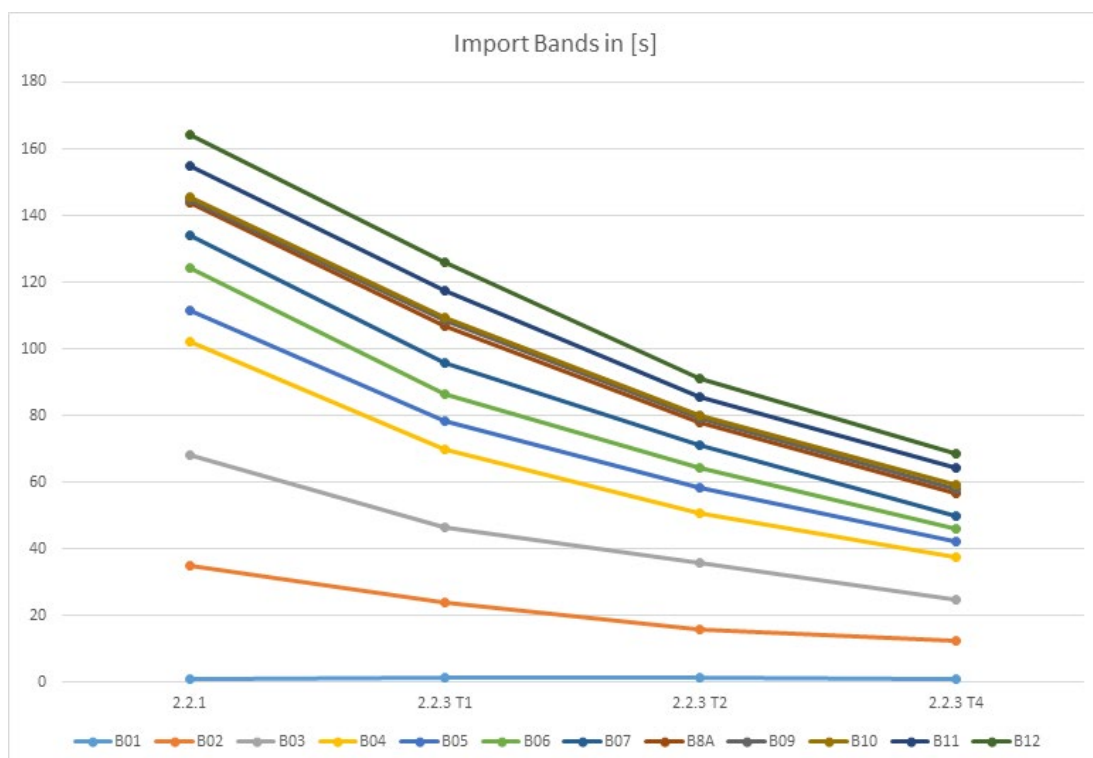
Users of Sen2Cor version ≥ 2.5 should download this ESACCI-LC for Sen2Cor data package (ESACCI-LC-L4-ALL-FOR-SEN2COR.zip) from this location:

<http://maps.elie.ucl.ac.be/CCI/viewer/download.php>

This zip file shall then be extracted at this location of Sen2Cor installation:

'`$SEN2COR_BIN/aux_data/`'

- ❖ Supporting multithreading feature for reading L1C Images with OpenJPEG. OpenJPEG, version 2.3 allows the usage of multithreading to speed up the reading of the L1C input images. The configuration is set by default to AUTO, which detects the amount of usable threads by calling `cpu_count()`. If the user does not want this feature or want to set the amount of threads individually, the parameter can be changed between a value of 1 (single thread processing) up to 8. See section 3.1.4.4. Figure 2 below shows the speed improvement for reading on a 2 Core Intel I5 platform with 8 GB of RAM between OpenJPEG 2.1 (left) and (new) OpenJPEG 2.3 with one, two and four threads applied.




| | | |
|---|---|--|
|  | <p>Optical MPC</p> <p>Sen2Cor 2.11.00 Software Release Note</p> | <p>Ref.: OMPC.TPZG.SRN.003 Issue: 1.0 Date: 21/11/2022 Page: 14</p> |
|---|---|--|

Figure 2 – Performance improvement using OpenJPEG 2.3 and multithreading

3.1.6.3 Corrective Maintenance

The following fixes have been applied to Sen2Cor since Release 2.4.2:

<https://jira.acri-cwa.fr/browse/SIIMPC-1241>: ZeroDivisionError has been fixed.

<https://jira.acri-cwa.fr/browse/SIIMPC-1245>: Mismatches in the surface reflectance between 60, 20 and 10m have been fixed.

<https://jira.acri-cwa.fr/browse/SIIMPC-1241>: fixing a zero division error when only background pixels are identified.

<https://jira.acri-cwa.fr/browse/SIIMPC-1255>: datastrip shows a wrong satellite ID and version number under certain conditions.

<https://jira.acri-cwa.fr/browse/SIIMPC-1257>: If no ESA CCI auxiliary data are installed the following entries in the L2A Datastrip are set to “None”:

<ESACCI_WaterBodies_Map>

<ESACCI_LandCover_Map>

<ESACCI_SnowCondition_Map_Dir>

<https://jira.acri-cwa.fr/browse/SIIMPC-1271>: Sen2cor fails with higher version of numpy in L2A_SceneClass.py.

<https://jira.acri-cwa.fr/browse/SIIMPC-1272>: Correcting the no data mask in the scene classification module as shown below.

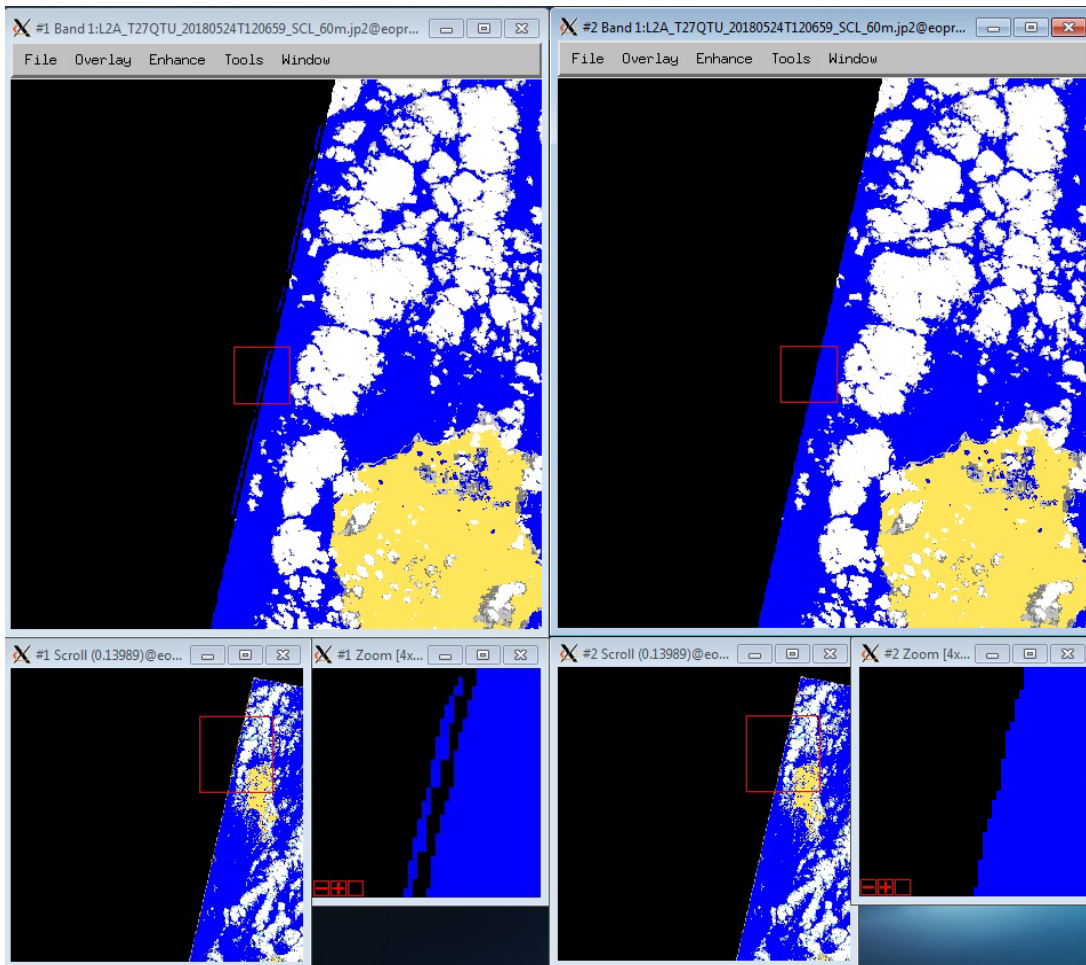


Figure 3 – Improvement of no data mask.

<https://jira.acri-cwa.fr/browse/SIIMPC-1286>: resampling issue after 60m resampling restart

<https://jira.acri-cwa.fr/browse/SIIMPC-1289>: Tile processing failed with error "index 255 is out of bounds"


<https://jira.acri-cwa.fr/browse/SIIMPC-1341>: (and SIIMPC-1241) "failure with error "All images contain only background pixels": Instead of stopping with an error message, the processing is now performed excluding the atmospheric correction. A full (but empty) product will be stored instead.

<https://jira.acri-cwa.fr/browse/SIIMPC-1344>: The configuration parameter DEM_Unit was removed from the configuration file L2A_GIPP, as [cm] and [dm] are not used in the code. DEM Dimension in the code is always given in [m]. The corresponding code, which led to the error, was removed.

<https://jira.acri-cwa.fr/browse/SIIMPC-1349>: move getBand() calls outside of Loops: After moving these calls outside of the loop about 200 – 250 seconds are saved and the database access decreases from 321 calls down to 31.

<https://jira.acri-cwa.fr/browse/SIIMPC-1354>: Concurrency problem with configPic.p. The data file configPic will additionally get the filename of the corresponding tile as prefix to avoid concurrency and will be kept in the work directory, to be aligned with all other temporary created files.

<https://jira.acri-cwa.fr/browse/SIIMPC-1019>: Pixels under semi-transparent clouds are erroneously "terrain-corrected". This leads to artefacts where the mountain slopes opposed to the sun are artificially "brightened". This has been resolved by applying a mask for non-transparent clouds (and saturated or no data pixels) to exclude them from terrain correction. Figure 6 below shows in

| | | |
|---|---|--|
|  | <p>Optical MPC</p> <p>Sen2Cor 2.11.00 Software Release Note</p> | <p>Ref.: OMPC.TPZG.SRN.003</p> <p>Issue: 1.0</p> <p>Date: 21/11/2022</p> <p>Page: 16</p> |
|---|---|--|

clockwise order: L1C, Band4 input. L2A_Band4 with artefact. L2A_Band4 after correction, L2A_AOT as a control for avoiding possible side effects.

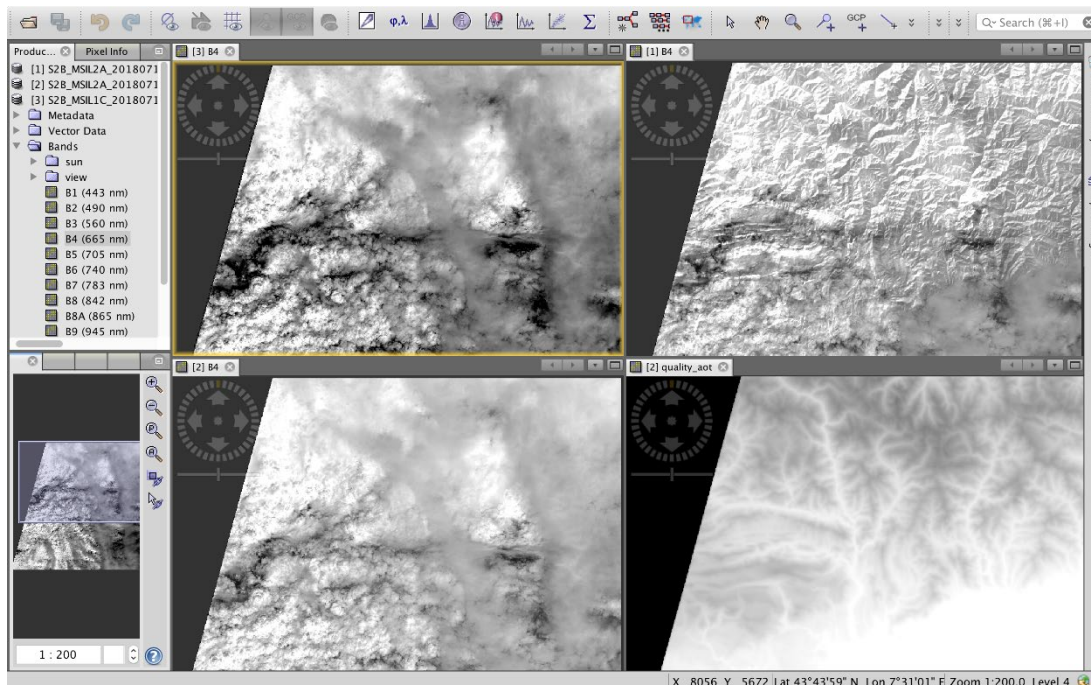


Figure 4 – Excluding terrain correction for clouds

<https://jira.acri-cwa.fr/browse/SIIMPC-1357>: wrong MASK_FILENAME in tile metadata. Metadata now show the correct filenames.

<https://jira.acri-cwa.fr/browse/SIIMPC-1298>: disable the insertion of a DEM string in the metadata if no DEM is selected. The user can now alternatively insert a string of individual choice in the DEM_reference field. This string is then shown if the user selects a DEM for usage. If no DEM is selected, 'none' will be inserted in the metadata instead.


<https://jira.acri-cwa.fr/browse/SIIMPC-1366>: In Sen2Cor-02.06.05 and Sen2Cor-02.06.06 the files .estimation and .progress are written in folder Sen2Cor-02.06.06-Linux64/lib/python2.7/site-packages/sen2cor/log/ instead they shall be written in the folder working_dir in order to avoid conflicts when several tiles are processed in parallel.

<https://jira.acri-cwa.fr/browse/SIIMPC-1341>: Processor now creates empty bands for AOT and Water Vapor, if no reflectance pixels are found in the input files.

<https://jira.acri-cwa.fr/browse/SIIMPC-1376>: During IVV, it has been discovered that, when the DEM_Directory is not correctly filled in in the GIP_L2ACFG file and Sen2Cor cannot find it, it still exits with code 0 giving a wrong success message. This has been corrected and will give now a qualified error message.

<https://jira.acri-cwa.fr/browse/SIIMPC-1225>: MPC/CC verification of the sample PDGS L2A - NO_DATA values present, patch applied.

<https://jira.acri-cwa.fr/browse/SIIMPC-1226>: ozone value 370 added as an allowed value in the L2A_GIPP.xsd schema. Was initially missing.

| | | |
|---|---|--|
|  | <p>Optical MPC</p> <p>Sen2Cor 2.11.00 Software Release Note</p> | <p>Ref.: OMPC.TPZG.SRN.003</p> <p>Issue: 1.0</p> <p>Date: 21/11/2022</p> <p>Page: 17</p> |
|---|---|--|

<https://jira.acri-cwa.fr/browse/SIIMPC-1390>: An alignment of the level 2A Metadata between the products available on the SciHUB and the products generated by Sen2Cor in the Toolbox mode has been performed.

<https://jira.acri-cwa.fr/browse/SIIMPC-1427>: Discontinuities in topographic correction. It has been noticed over Sahara (see image below) that some L2A tile seems to be terrain-corrected while the other neighboring tiles are not terrain-corrected. The origin of these different processing behaviors is caused by a threshold used in the Atmospheric Correction algorithm, when checking the peak-to-peak height in the tile pixels. For some tile, the peak-to-peak height condition leads to a terrain correction, whereas for some adjacent tiles, the peak-to-peak height condition leads to a flat terrain assumption without terrain correction. The chosen solution was to make the threshold value of this peak-to-peak height condition configurable in the file L2A_CAL_AC_GIPP.xml. Setting a lower value for peak-to-peak height condition allows to get more tiles to be processed with terrain correction, still excluding flat areas like seas. The default value is now set to 50 m instead of 300 as it was before.

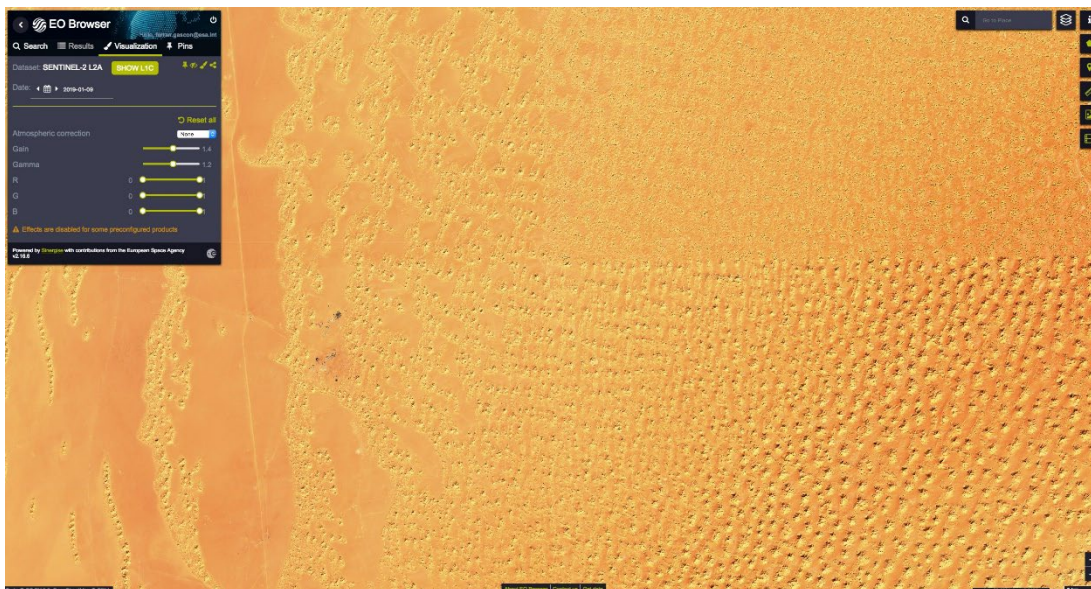


Figure 5 – Changes in the peak-to-peak values between different tiles


3.1.6.4 Configuration Changes

Configuration as contained in the **L2A_GIPP.xml**. The configuration file has changed considerably. So it is advised to compare the L2A_GIPP.xml from version 2.5.5 with the recent one and to align to the new version, if individual changes have been performed. The following parameters have been changed in detail:

Operation_Mode: TOOLBOX/PDGS: This configuration has been removed. Sen2Cor automatically detects via the command-line settings, which operation mode shall be performed.

Target_Directory: this configuration has been replaced by the command-line option `-output_dir`, which is equivalent for Toolbox and PDGS mode.

DEM_Reference: no changes to Version 2.5.5 when using SRTM DEMs. If Planet DEMs are used, it is possible to add here the local path where the DEM's are installed. This will then be displayed in the datastrip metadata. Note: this is only an optional string. It has no impact on the configuration itself.

| | | |
|---|---|--|
|  | <p>Optical MPC</p> <p>Sen2Cor 2.11.00 Software Release Note</p> | <p>Ref.: OMPC.TPZG.SRN.003 Issue: 1.0 Date: 21/11/2022 Page: 18</p> |
|---|---|--|

Downsample_20_to_60: TRUE/FALSE: this configuration has been added. If it is set to TRUE a downsampling from 20 to 60 m resolution will take place as a post-processing step @ 20 m processing.

PSD_Scheme: Version 13.1 has been removed, as it is no longer supported.

PSD_Scheme: Version 14.3 has been removed, as it is unused.

DEM_Terrain_Correction: TRUE/FALSE: this configuration has been added to exclude the terrain correction when using a DEM (see SIIMPC-557 and SIIMPC-1298).

DEM_Unit: this configuration has been removed, as [cm] and [dm] are not used in the code. DEM Dimension in the code is always given in [m].

Database_Compression_Level: this configuration has been added and is by default set to 1.

Nr_Processes: This parameter has been removed as the processing of multi tile products (until PSD 13.1) is no longer supported. In previous versions of Sen2Cor (up to 2.5.5), it was possible to process multiple tiles in parallel with one single instance of the application. It is however still possible, to run several instances of Sen2Cor in parallel, to process different tiles.

Nr_Threads: this is a new parameter allowing the usage of multithreading to speed up the reading of the L1C input images (see section 3.1.4.2 above). It is set to AUTO by default, which detects the amount of usable threads by calling `cpu_count()`. If the user does not want this feature or want to set the amount of threads individually, the parameter can be changed between a value of 1 (which is single thread processing, as before) up to 8.

AC_Dem_P2p_Val: this parameter in the expert configuration file L2A_CAL_AC_GIPP is related to <https://jira.acri-cwa.fr/browse/SIIMPC-1427> (see section 3.1.4.3 above). It is set by default to 50 instead of a hard coded value of 300 as it was before. It can be changed back up to 300, but it is recommended to keep the default value.

3.1.6.5 Differences between DHUS and Toolbox generated L2A User Product

The HTML folder is not present in the Toolbox generated L2A user product

The manifest is generated differently for L2A products on the Data Hub Server in comparison to the Toolbox generated user product.

Both issues will be aligned in future releases.

3.1.7 Evolutions since release 2.7.2

3.1.7.1 Software Installation


The installation is equivalent to the previous version 2.7.2.

3.1.7.2 Evolutionary Updates

<https://jira.acri-cwa.fr/browse/SIIMPC-1420> +

<https://jira.acri-cwa.fr/browse/SIIMPC-1421> : update of the python runtime libraries to support OpenJPEG 2.3.

<https://jira.acri-cwa.fr/browse/SIIMPC-1422> : supporting multithreading feature for reading L1C Images with OpenJPEG 2.3. See further descriptions in section 3.1.4.2.

| | | |
|---|---|--|
|  | <p>Optical MPC</p> <p>Sen2Cor 2.11.00 Software Release Note</p> | <p>Ref.: OMPC.TPZG.SRN.003 Issue: 1.0 Date: 21/11/2022 Page: 19</p> |
|---|---|--|

3.1.7.3 Corrective Maintenance

<https://jira.acri-cwa.fr/browse/SIIMPC-1419> : remove the full path for MASK_FILENAME in the tile metadata for PDI (PDGS) mode.

<https://jira.acri-cwa.fr/browse/SIIMPC-1424> : small clean-ups on Windows had been required due to the long period of evolutions concentrated on the Linux systems only.

<https://jira.acri-cwa.fr/browse/SIIMPC-1427> : Discontinuities in topographic correction. It has been noticed over Sahara that some L2A tile seems to be terrain-corrected while the other neighboring tiles are not terrain-corrected. The origin of these different processing behaviors is caused by a threshold used in the Atmospheric Correction algorithm, when checking the peak-to-peak height in the tile pixels.

For some tile, the peak-to-peak height condition leads to a terrain correction, whereas for some adjacent tiles, the peak-to-peak height condition leads to a flat terrain assumption without terrain correction. The chosen solution was to make the threshold value of this peak-to-peak height condition configurable in the file L2A_CAL_AC_GIPP.xml. Setting a lower value for peak-to-peak height condition allows to get more tiles to be processed with terrain correction, still excluding flat areas like seas. De default value is now set to 50 m instead of 300 as it was before.

3.1.8 Evolution since release 2.7.1

3.1.8.1 Software Installation

The installation is equivalent to the previous version 2.7.1.

3.1.8.2 Evolutionary Updates

The Usage of Sen2Cor in Toolbox mode now also supports previous PSD version 14.2 by upgrading the metadata to PSD Version 14.6. Old multiple tile versions (PSD Version 13.1) are no longer supported.

Two new options for the Toolbox mode are present:

--processing_centre: with this option, it is possible to change the code for the processing centre in the metadata. Expected is a four-character code or “_”. Examples: “--processing_centre = ABCD” or “SGS_”.

--processing_baseline: with this option, it is possible to change the processing baseline in the metadata. Expected is a string in the format “dd.dd”. Example: “--processing_baseline = 08.15”.

3.1.8.3 Corrective Maintenance


<https://jira.acri-cwa.fr/browse/SIIMPC-1225>: MPC/CC verification of the sample PDGS L2A - NO_DATA values present

<https://jira.acri-cwa.fr/browse/SIIMPC-1390>: An alignment of the level 2A Metadata between the products available on the SciHUB and the products generated by Sen2Cor in the Toolbox mode has been performed.

3.1.9 Evolution since release 2.7.0

3.1.9.1 Software Installation

The installation is equivalent to the previous version 2.7.0.

| | | |
|---|---|--|
|  | <p>Optical MPC</p> <p>Sen2Cor 2.11.00 Software Release Note</p> | <p>Ref.: OMPC.TPZG.SRN.003 Issue: 1.0 Date: 21/11/2022 Page: 20</p> |
|---|---|--|

3.1.9.2 Evolutionary Updates

None

3.1.9.3 Corrective Maintenance

The following issues have been resolved together with release 2.7.1:

<https://jira.acri-cwa.fr/browse/SIIMPC-1226> : ozone value 370 added as an allowed value in the L2A_GIPP.xsd schema. Was initially missing.

<https://jira.acri-cwa.fr/browse/SIIMPC-1378> (SCOR-5): the configuration object stored the path of the databases during the preprocessing step and did not change it afterwards. If the databases is moved and the 10m processing is called at a later point in time, the same path as for 20m processing was used and the processing failed. This is now corrected by updating the path with the entry from command line at each new processing step.

<https://jira.acri-cwa.fr/browse/SIIMPC-1379> : assessment of release 2.7.0 has identified that the PVI size is a lot smaller in the new version. The PVI image was overwritten after the down sampling from 20 to 60m and was thus much smaller. A flag for preventing the overriding was not set.

<https://jira.acri-cwa.fr/browse/SIIMPC-1382> (SCOR-6): the gdal software routines handling the crossing of international date lines had not been applied to the new CCI auxiliary inputs.

<https://jira.acri-cwa.fr/browse/SIIMPC-1385> (SCOR-7): L2A DS coming from EDRS are produced with a name S2x_OPER_MSI_L2A_DS_EPA instead S2x_OPER_MSI_L2A_DS_EPAE. The archiving_center parameter was used to name the DS instead of the processing_center parameter.

3.1.9.4 Configuration Changes

None

3.1.10 Evolution since release 2.6.6

3.1.10.1 Software Installation

The installation is equivalent to the previous version 2.6.6. As the configuration file L2A_GIPP.xml has changed, be sure to replace the current configuration with the updated file. See also section 3.1.8.4 for configuration changes.

3.1.10.2 Evolutionary Updates

The following fixes have been applied to this release:

<https://jira.acri-cwa.fr/browse/SIIMPC-557> : it should be possible to decouple the DEM processing as an option or a configuration of the L2A_GIPP.xml. This has been achieved by using the same routines like in flat terrain calculation (dtm_flat) and disabling the terrain iteration, for the terrain corrections, whereas Scene Classification, AOT (and WVP) are still calculated using the DEM input. There is a new option <DEM_Terrain_Correction> in the L2A_GIPP configuration file, which can be set to TRUE / FALSE.

<https://jira.acri-cwa.fr/browse/SIIMPC-1300> : improve the database size needed for storage of the products. Initial need for this optimisation was the fact that the database could grow up to > 5 GB and thus was impossible to keep in a RAM disk. The following changes have been implemented:

- ❖ A command line option allows to specify the two locations of the image and the temporary database. Two different user selectable locations are available in order to select between the separate usage of a ramdisk and a normal disk space.
- ❖ There is also a configurable compression factor available in the User configuration file L2A_GIPP.xml (see also [<https://jira.acri-cwa.fr/browse/SIIMPC-1300>]): it is recommended to use a compression factor of 1, which allows a reduction of the databases to about 2/3 of their original size in the non-compressed mode.
- ❖ In the first processing stage the image database will load only the bands needed for the 20 m processing (except 10 m Band 8). After the 20m processing is performed, all bands (except the three 10m bands 1-3) are removed and Band 8 will be loaded. Thus, the database will keep a size below 1 GB during the whole processing.
- ❖ The temporary database will import all auxiliary data (like the DEMs and ESACCI images). It will additionally store the resampled bands from the image database and the processed products from the 20 m Scene Classification (Classification Map) and Atmospheric correction (AOT/Visibility and Water Vapor). After the 20 m processing is performed, only these products will be up-sampled to 10 m and copied into a new temporary database. The old database with all products no longer needed will be removed.
- ❖ In the 10 m processing the temporary database keeps the AOT/Visibility and Water vapor and imports the new resampled auxiliary data, needed for the 10m processing.
- ❖ The down-sampling routine to 60 m has also improved in that way that the output products will be directly converted to their final format, so that no further storage of these down-sampled products in the database is required.
- ❖ Additionally, all bands which are no longer needed in the processing chain are removed from the temporary database, to free space for other intermediate products.

With this, the following measures have been obtained by operation of a full sized L1C tile with configured DEM, processing for 20 and 10 m and a down-sampling of the 20m product to 60 m.

| Resolution | Image DB | Temp DB |
|-----------------|----------|---------|
| 20 m processing | 739 MB | 1.53 GB |



| Resolution | Image DB | Temp DB |
|---------------------|-----------------------|-----------------------|
| Down sampling to 60 | No changes in DB size | No changes in DB size |
| 10 m processing | 867 MB | 1.963 GB |

| | | |
|---|---|---|
|  <p>OPT-MPC Optical Mission Performance Cluster</p> | <p>Optical MPC</p> <p>Sen2Cor 2.11.00 Software Release Note</p> | <p>Ref.: OMPC.TPZG.SRN.003 Issue: 1.0 Date: 21/11/2022 Page: 23</p> |
|---|---|---|

The update of the command line parameters is as follows:

Command Line Parameters for the generation of Datastrip or Tile (PDGS mode)

L2A_Process --help

```
usage: L2A_Process.py [-h] [--mode MODE] [--resolution {10,20,60}]
                    [--datastrip DATASTRIP] [--tile TILE]
                    [--output_dir OUTPUT_DIR] [--work_dir WORK_DIR]
                    [--img_database_dir IMG_DATABASE_DIR]
                    [--res_database_dir RES_DATABASE_DIR]
                    [--processing_centre PROCESSING_CENTRE]
                    [--archiving_centre ARCHIVING_CENTRE] [--raw] [--tif]
                    [--sc_only] [--cr_only] [--debug] [--refresh]
                    [--GIP_L2A GIP_L2A] [--GIP_L2A_SC GIP_L2A_SC]
                    [--GIP_L2A_AC GIP_L2A_AC] [--GIP_L2A_PB GIP_L2A_PB]
                    input_dir
```

Sentinel-2 Level 2A Processor (Sen2Cor). Version: 2.7.0, created: 2018.21.09, supporting Level-1C product version <= 14.6.

positional arguments:

input_dir Directory of Level-1C input

optional arguments:

-h, --help show this help message and exit

--mode MODE Mode: generate_datastrip, process_tile

--resolution {10,20,60} Target resolution, can be 10, 20 or 60m. If omitted, only 20 and 10m resolutions will be processed

--datastrip DATASTRIP Datastrip folder

--tile TILE Tile folder

--output_dir OUTPUT_DIR Output directory

--work_dir WORK_DIR Work directory

--img_database_dir IMG_DATABASE_DIR Database directory for L1C input images

--res_database_dir RES_DATABASE_DIR Database directory for results and temporary products

--processing_centre PROCESSING_CENTRE Processing centre

--archiving_centre ARCHIVING_CENTRE Archiving centre

--raw Export raw images in raw1 format with ENVI hdr

--tif Export raw images in TIFF format instead of JPEG-2000

--sc_only Performs only the scene classification at 60 or 20m resolution

--cr_only Performs only the creation of the L2A product tree, no processing

--debug Performs in debug mode


--refresh Performs a refresh of the persistent configuration before start

--GIP_L2A GIP_L2A Select the user GIPP

--GIP_L2A_SC GIP_L2A_SC Select the scene classification GIPP

--GIP_L2A_AC GIP_L2A_AC Select the atmospheric correction GIPP

--GIP_L2A_PB GIP_L2A_PB Select the processing baseline GIPP

| | | |
|--|---|---|
|  <p>OPT-MPC Optical Mission Performance Cluster</p> | <p>Optical MPC</p> <p>Sen2Cor 2.11.00 Software Release Note</p> | <p>Ref.: OMPC.TPZG.SRN.003 Issue: 1.0 Date: 21/11/2022 Page: 25</p> |
|--|---|---|

3.1.10.3 Corrective Maintenance

The following issues have been resolved together with this release:

<https://jira.acri-cwa.fr/browse/SIIMPC-1019> : Pixels under semi-transparent clouds are erroneously "terrain-corrected". This leads to artefacts where the mountain slopes opposed to the sun are artificially "brightened". This has been resolved by applying a mask for non-transparent clouds (and saturated or no data pixels) to exclude them from terrain correction. Figure 6 below shows in clockwise order: L1C, Band4 input. L2A Band4 with artefact. L2A_Band4 after correction, L2A_AOT as a control for avoiding possible side effects.

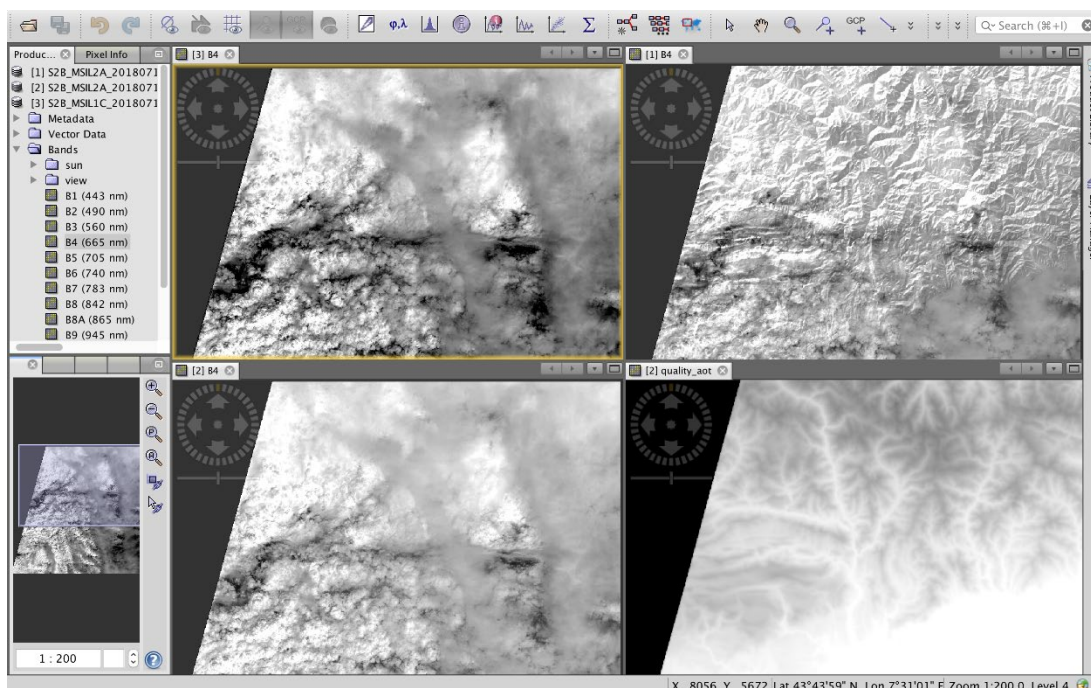


Figure 6 – Excluding terrain correction for clouds

<https://jira.acri-cwa.fr/browse/SIIMPC-1357> : wrong MASK_FILENAME in tile metadata. Metadata now show the correct filenames.


<https://jira.acri-cwa.fr/browse/SIIMPC-1298> : disable the insertion of a DEM string in the metadata if no DEM is selected. The user can now alternatively insert a string of individual choice in the DEM_reference field. This string is then shown if the user selects a DEM for usage. If no DEM is selected, 'none' will be inserted in the metadata instead.

<https://jira.acri-cwa.fr/browse/SIIMPC-1366> : In Sen2Cor-02.06.05 and Sen2Cor-02.06.06 the files .estimation and .progress are written in folder Sen2Cor-02.06.06-Linux64/lib/python2.7/site-packages/sen2cor/log/ instead they shall be written in the folder working_dir in order to avoid conflicts when several tiles are processed in parallel.

Fixed equivalent to release 2.6.7.

<https://jira.acri-cwa.fr/browse/SIIMPC-1341> : Processor now creates empty bands for AOT and Water Vapor, if no reflectance pixels are found in the input files.

<https://jira.acri-cwa.fr/browse/SIIMPC-1376> : During IVV, It has been discovered that, when the DEM_Directory is not correctly filled in in the GIP_L2ACFG file and that Sen2Cor can not find it,

| | | |
|---|---|--|
|  | <p>Optical MPC</p> <p>Sen2Cor 2.11.00 Software Release Note</p> | <p>Ref.: OMPC.TPZG.SRN.003</p> <p>Issue: 1.0</p> <p>Date: 21/11/2022</p> <p>Page: 26</p> |
|---|---|--|

Sen2Cor still exits with code 0. Fixed as described in the according ticket. This is a copy from: <https://jiraesa.s2pdgs.com/browse/SCOR-3>.

3.1.10.4 Configuration Changes

The following configuration changes have been applied within the context of SIIMPC-557:

Setting of DEM_Terrain Correction:

```
<DEM_Terrain_Correction>TRUE/FALSE</DEM_Terrain_Correction>
```

True: DEM is used for terrain correction. False DEM is excluded for terrain correction.

Selection of DEM and DEM_Reference:

```
<DEM_Directory>NONE</DEM_Directory>
```

```
<!-- should be either a directory in the sen2cor home folder or 'NONE'. If NONE, no DEM will be used -->
```

```
<DEM_Reference>NONE</DEM_Reference>
```

```
<!-- DEM_Reference>http://data_public:GDdci@data.cgiar-csi.org/srtm/tiles/GeoTIFF/</DEM_Reference -->
```

```
<!-- disable / enable the upper two rows if you want to use an SRTM DEM -->
```

```
<!-- The SRTM DEM will then be downloaded from this reference, if no local DEM is available -->
```

```
<!-- if you use Planet DEM you can optionally add the local path instead, which then will be inserted in the datastrip metadata -->
```

3.1.11 Evolution since release 2.6.5

3.1.11.1 Software Installation

The installation is equivalent to the previous version 2.6.5. As the configuration file L2A_GIPP.xml has changed, be sure to replace the current configuration with the updated file.

3.1.11.2 Evolutionary Updates

The following fixes have been applied to this release:

<https://jira.acri-cwa.fr/browse/SIIMPC-1327> : command line option to specify the hd5 image database path. It will be used by PDGS to store the image database on ramdisk:

Example:

```
L2A_Process --mode=process_tile --datastrip=
/home/inp/S2B_OPER_MSI_L2A_DS_MTI__20180910T085929T103021_N02.06
--tile=/home/inp/L1C_T33VWH_A006855_20180629T103021
--database_dir=/home/tmp
--work_dir=/home/tmp
--output_dir=/home/out
--raw
```

<https://jira.acri-cwa.fr/browse/SIIMPC-1300> : Image database size: The size of the image database has been made configurable via the configuration file L2A_GIPP.xml. The following measures have been performed:

- The size of the used 10m JP2 test Image is: 156.6 MB
- The size of HDF5 database in uncompressed mode is 241.2 MB for storing the single test image above.

- The database can effectively be decompressed to ~ 160 MB using compression level 2-4 with an average additional time of 4-6 s for the read of each band. All higher compression levels are not recommended. Default configuration is: (0) no compression.

Table 3 – Database size and access time dependent for selected compression level

| Compression Level | DB Size (%) | Read (s) |
|-------------------|-------------|----------|
| 0 | 100 | 0.3 |
| 1 | 68 | 4 |
| 2 | 67 | 5 |
| 3 | 67 | 7 |
| 4 | 66 | 6 |
| 5 | 66 | 9 |
| 6 | 65 | 15 |
| 7 | 65 | 20 |
| 8 | 65 | 57 |
| 9 | 65 | 102 |

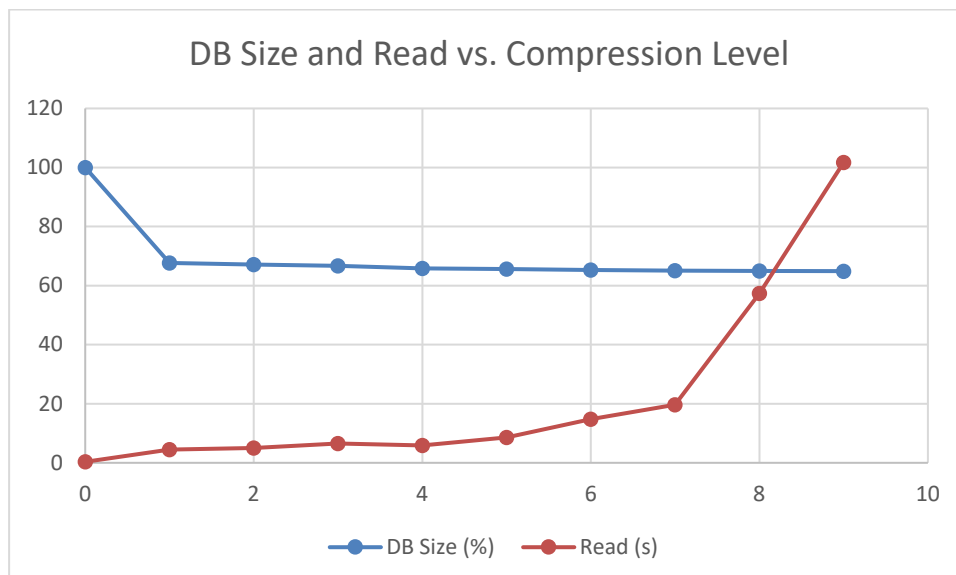



Figure 7 – Database size and read access time vs. compression level

3.1.11.3 Corrective Maintenance

The following issues have been resolved together with this release:

<https://jira.acri-cwa.fr/browse/SIIMPC-1286>: resampling issue after 60m resampling restart

| | | |
|---|---|--|
|  | <p>Optical MPC</p> <p>Sen2Cor 2.11.00 Software Release Note</p> | <p>Ref.: OMPC.TPZG.SRN.003 Issue: 1.0 Date: 21/11/2022 Page: 28</p> |
|---|---|--|

Fix as described in the corresponding ticket.

<https://jira.acri-cwa.fr/browse/SIIMPC-1289>: Tile processing failed with error "index 255 is out of bounds"

Fix as described in the corresponding ticket.

<https://jira.acri-cwa.fr/browse/SIIMPC-1341>: (and SIIMPC-1241) "failure with error "All images contain only background pixels": Instead of stopping with an error message, the processing is now performed excluding the atmospheric correction. A full (but empty) product will be stored instead. This fix was already delivered as a patch for release 2.6.3.

<https://jira.acri-cwa.fr/browse/SIIMPC-1344> : The configuration parameter DEM_Unit was removed from the configuration file L2A_GIPP, as [cm] and [dm] are not used in the code. DEM Dimension in the code is always given in [m]. The corresponding code, which led to the error, was removed. See ticket for further explanation.

<https://jira.acri-cwa.fr/browse/SIIMPC-1349>

move getBand() calls outside of Loops:

After moving these calls outside of the loop about 200 – 250 seconds are saved and the database access decreases from 321 calls down to 31.

```

ncalls  tottime  percall  cumtime  percall
filename:lineno(function)
      1    0.515    0.515   864.802   864.802
L2A_AtmosCorr.py:2944(process)
      1   80.172   80.172   356.315   356.315
L2A_AtmosCorr.py:7645(rho_retrieval_step1)
     321   45.852    0.143   259.000    0.807
L2A_Tables.py:2429(getBand)

```

```

ncalls  tottime  percall  cumtime  percall
filename:lineno(function)
      1    0.529    0.529   600.237   600.237
L2A_AtmosCorr.py:2938(process)
      1   74.095   74.095   130.558   130.558
L2A_AtmosCorr.py:7606(rho_retrieval_step1)
     31    9.488    0.306    69.064    2.228
L2A_Tables.py:2528(getBand)

```

<https://jira.acri-cwa.fr/browse/SIIMPC-1354> : Concurrency problem with configPic.p. For Sen2Cor 2.6.6 and above, the data file configPic will additionally get the filename of the corresponding tile as prefix to avoid concurrency and will be kept in the work directory, to be aligned with all other temporary created files.

3.1.12 Evolution since release 2.6.3

The installation is equivalent to the previous version 2.6.3.

| | | |
|---|---|--|
|  | <p>Optical MPC</p> <p>Sen2Cor 2.11.00 Software Release Note</p> | <p>Ref.: OMPC.TPZG.SRN.003 Issue: 1.0 Date: 21/11/2022 Page: 29</p> |
|---|---|--|

3.1.12.1 Evolutionary Updates

<https://jira.acri-cwa.fr/browse/SIIMPC-1258> : a down sampling to 60m resolution has been implemented as a post processing step for a 20m processing. This option can be used alternatively for a 60m processing and improves the performance by about 3 – 5 minutes.

Changes in the configuration:

- ❖ This version does no longer perform the processing of a 60m resolution by default. If no resolution is specified via command line, only 20m and 10m resolutions are processed.
- ❖ If “--resolution=60” is specified via command line, a 60m resolution processing is still possible.
- ❖ There is now a new option to perform a 60m down sampling following a 20m processing, which can be activated via the configuration file L2A_GIPP.xml:
- ❖ Option: `<Downsample_20_to_60>TRUE</Downsample_20_to_60>`

3.1.12.2 Corrective Maintenance

The following issues have been resolved together with this release:

- ❖ <https://jira.acri-cwa.fr/browse/SIIMPC-1241> : fixing a zero division error when only background pixels are identified.
- ❖ <https://jira.acri-cwa.fr/browse/SIIMPC-1255> : datastrip shows a wrong satellite ID and version number under certain conditions.
- ❖ <https://jira.acri-cwa.fr/browse/SIIMPC-1257> : If no ESA CCI auxiliary data are installed the following entries in the L2A Datastrip shall be set to “None”:
- ❖ `<ESACCI_WaterBodies_Map>`
`<ESACCI_LandCover_Map>`
`<ESACCI_SnowCondition_Map_Dir>`
- ❖ <https://jira.acri-cwa.fr/browse/SIIMPC-1264> : adding export for RAW and GeoTiff and aligning output format to L1C input (Kakadu).
- ❖ <https://jira.acri-cwa.fr/browse/SIIMPC-1271> : Sen2cor fails with higher version of numpy in L2A_SceneClass.py.
- ❖ <https://jira.acri-cwa.fr/browse/SIIMPC-1272> : Correcting the no data mask in the scene classification module as shown below.

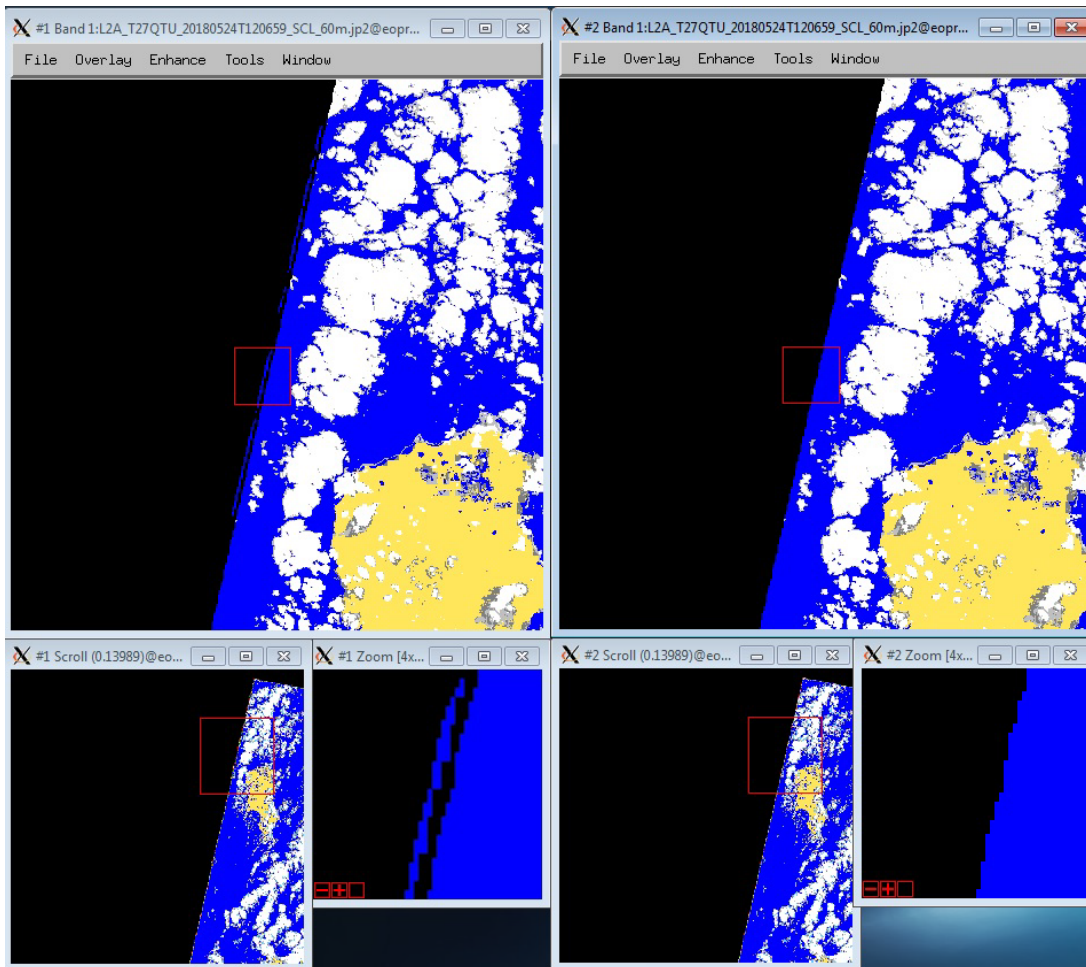


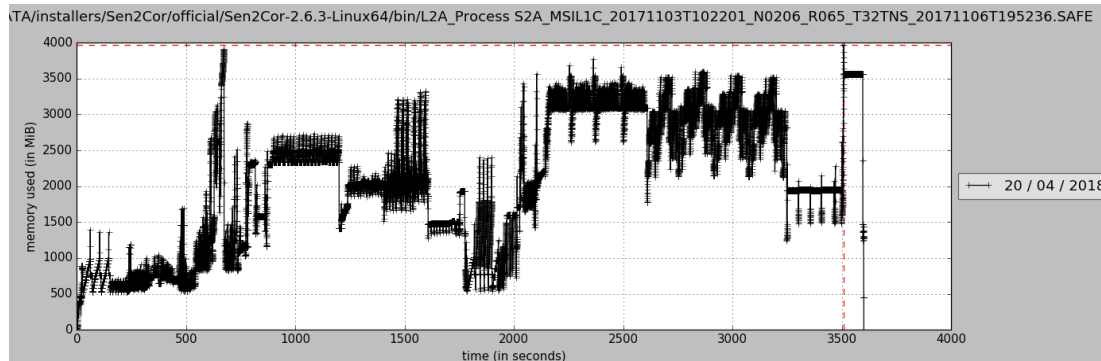
Figure 8 – Improvement of no data mask.

3.1.13 Evolution since release 2.6.2

No changes in the user interface have been implemented since the last version 2.6.2. The installation is equivalent to the previous version 2.6.2.

3.1.13.1 Evolutionary Updates

- ❖ Improved RAM consumption in version 2.6.3 to less than 4 GB
 - RAM usage below 4GB during the full processing
 - Processing time equivalent to sen2Cor Version 02.05.05
 - L2A surface reflectance (and other AOT, WVP, SCL, TCI, PVI files) values equivalent to Version 02.05.05



- ❖ For Version 2.6.3, all bands are only read in once for all resolutions: improvement in RAM usage as described above led to slight increases in the processing time. This could mostly be compensated by an improvement of the band reader, in which all bands are only read in once and resampled, if necessary.
- ❖ In addition, the Scene Classification of snow/ice has been improved, enabling the detection of snow above frozen lakes and icebergs in Arctic and Antarctic Sea. This has been done relying less on ESA CCI aux data and relaxing one of the snow thresholds.

3.1.13.2 Corrective Maintenance

The following issues have been resolved together with this release:

- ❖ Filenames for masks are still in long format in the metadata:
- ❖ <https://jira.acri-cwa.fr/browse/SIIMPC-1227>
- ❖ Sen2Cor failure: ZeroDivisionError:
- ❖ <https://jira.acri-cwa.fr/browse/SIIMPC-1241>
- ❖ Mismatches in the surface reflectance between 60, 20 and 10m:
- ❖ <https://jira.acri-cwa.fr/browse/SIIMPC-1245>

3.1.14 Evolution since release 2.6.1

3.1.14.1 Evolutionary Updates


Upgrade to PSD Version 14.6

Sen2Cor now also supports an End User Product PSD Version 14.3 – 14.6 with Standard SAFE Format as input. The output is converted to SAFE compact.

3.1.14.2 Corrective Maintenance

According to: <https://jira.acri-cwa.fr/browse/SIIMPC-1219>

- [2]: ESA CCI: ERRORS replaced with WARNINGS;
- [3]: default installation folder as Sen2Cor-02.06.02 instead of Sen2Cor-2.6.2;
- [5]: Corrected the output of the datatake identifier;
- [6]: Tile Folder Name, inherits processing baseline from Datastrip;

| | | |
|---|---|--|
|  | <p>Optical MPC</p> <p>Sen2Cor 2.11.00 Software Release Note</p> | <p>Ref.: OMPC.TPZG.SRN.003 Issue: 1.0 Date: 21/11/2022 Page: 32</p> |
|---|---|--|

- [6]: MTD_TL.xml: archiving centre is correctly updated from Datastrip;
- [6]: MTD_TL.xml: Datastrip and Tile ID get correct baseline from Datastrip;
- [6]: Tile Folder Name: processing centre is correctly updated from Datastrip;
- [6]: Tile Folder Name: generation time is correctly updated with UTC_DATE_TIME from Datastrip;
- [7]: GIP_L2A_USR is not written in Datastrip;
- [8]: PRODUCTION_DEM_TYPE in L2A USER MTD: updated from L2A_GIPP;
- [9]: FORMAT_CORRECTNESS.xml, GENERAL_QUALITY.xml, GEOMETRIC_QUALITY.xml, SENSOR_QUALITY.xml removed from QA_FOLDER;
- [10]: ACCURAY corrected with ACCURACY.

According to: <https://jira.acri-cwa.fr/browse/SIIMPC-1217>

- ❖ Fixed issue due to some leap year affecting only the day of year 61 -> 2nd of March this year (raised with Sen2Cor 2.5.5).

Tests performed with PSD 14.6:

- ❖ Mode Datastrip processed with long format as input: output is long format;
- ❖ Mode Datastrip processed with short format as input: output is long format;
- ❖ Mode Tile processed with long format as input: output is long format;
- ❖ Mode Tile processed with short format as input: works, but requires long DS as input, this is in line with processing sequence, where first always a DS is generated in long format;
- ❖ Mode EUP processed with long format as input: output is short format as published on OpenHub;
- ❖ Mode EUP processed with short format as input: output is short as published on OpenHub.


3.1.15 Evolution since release 2.6.0

3.1.15.1 Evolutionary Updates

New option for output of images in raw format instead of JPEG-2000, as described in SUM and IODD
Evolutionary updates as listed for release 2.5.5 below merged to release 2.6.1
Updated documentation SUM and IODD for release 2.6.1
Memory optimisations as received from ESA for Atmospheric correction module

3.1.15.2 Corrective Maintenance

Fixing the limitations for EUP (Toolbox) mode. User products for PSD 14.3 can now also be generated
Outputs for Datastrip and Tile are now in standard SAFE format
Outputs for User Product are now in compact SAFE format
Fixes as listed for release 2.5.5 below are merged to release 2.6.1

| | | |
|---|---|--|
|  | <p>Optical MPC</p> <p>Sen2Cor 2.11.00 Software Release Note</p> | <p>Ref.: OMPC.TPZG.SRN.003 Issue: 1.0 Date: 21/11/2022 Page: 33</p> |
|---|---|--|

3.1.16 Evolution since release 2.5.5

3.1.16.1 Evolutionary Updates

The following features are implemented new for release 2.6.0:

SIIMPC-1119
Phase 2

Integration into PDGS according to CCN.2 Phase B:

- Support of datastrip generation mode from L1C input datastrip;
- Support of Tile processing mode from L1C input tile;
- L1C Datastrip and tiles can have the standard or compact DIMAP format;
- L2A Datastrip and Tile are always formatted in compact DIMAP format.

The new added command line parameters for PDGS mode (displayed in **bold**) are as follows:

```
L2A_Process --help
usage: L2A_Process.py [-h] [--mode MODE] [--resolution
{10,20,60}]
                                [--datastrip DATASTRIP] [--tile
TILE]
                                [--output_dir OUTPUT_DIR] [--
work_dir WORK_DIR]
                                [--processing_centre
PROCESSING_CENTRE]
                                [--archiving_centre
ARCHIVING_CENTRE] [--sc_only]
                                [--cr_only] [--refresh] [--
GIP_L2A GIP_L2A]
                                [--GIP_L2A_SC GIP_L2A_SC] [--
GIP_L2A_AC GIP_L2A_AC]
                                [--GIP_L2A_PB GIP_L2A_PB]
input_dir
```

```
Sentinel-2 Level 2A Processor (Sen2Cor). Version:
2.6.2, created: 2018.03.30,
supporting Level-1C product version <= 14.6.
```

positional arguments:

```
input_dir          Directory of Level-1C input
```

optional arguments:

```
-h, --help          show this help message and exit
--mode MODE       Mode: generate_datastrip,
process_tile
--resolution {10,20,60}
```

Target resolution, can be 10, 20 or 60m. If omitted, all resolutions will be processed

--datastrip DATASTRIP **Datastrip folder** (a full path)

--tile TILE **Tile folder** (a full path)

--output_dir OUTPUT_DIR **Output directory** (a full path)

--work_dir WORK_DIR **Work directory** (a full path)

--processing_centre PROCESSING_CENTRE **Processing centre**

--archiving_centre ARCHIVING_CENTRE **Archiving centre**

--sc_only Performs only the scene classification at 60 or 20m resolution

--cr_only Performs only the creation of the L2A product tree, no processing

--refresh Performs a refresh of the persistent configuration before start

--GIP_L2A GIP_L2A Select the user GIPP

--GIP_L2A_SC GIP_L2A_SC Select the scene classification GIPP

--GIP_L2A_AC GIP_L2A_AC Select the atmospheric correction GIPP

--GIP_L2A_PB GIP_L2A_PB Select the processing baseline GIPP (a filename with full path)

- Classical “TOOLBOX” Mode: This mode is to support the user community working on a Level-1C Product as downloaded from the SCI-Hub. No changes of the Interface compared for Sen2Cor 2.4.0 are present¹.

Example for command line:

```
L2A_Process
S2B_MSIL1C_20171004T233419_N0206_R001_T54DWM_20171005T0
01811.SAFE --resolution=60
2018-01-29T09:13:13.879
```

¹Due to necessary rearranges of the product formatter the Toolbox Mode is currently not supported in version 2.6.0 and will be fixed with version 2.6.1.

Output:

```
L2A_Logger : 89 logging for the main process
initialized
L2A_Process : 383 Sentinel-2 Level 2A Processor
(Sen2Cor). created: 2018.03.30, supporting Level-1C
product version <= 14.6.
started ...
L2A_Process : 384 Product version: 14.3
L2A_Process : 385 Operation mode: TOOLBOX.
L2A_XmlParse : 109 validating metadata file MTD_DS.xml
against scheme
...
L2A_Process : 461 Progress[%]: 100.00 : Application
terminated successfully.
```

- PDGS mode GENERATE_DATASTRIP:

Example for command line:

```
L2A_Process
--mode=generate_datastrip
--datastrip=<directory of users
choice>/DS_MPS__20171005T001811_20171004T233413
--work_dir=<directory of users choice>
--output_dir=<directory of users choice>
--processing_centre=<four digit code, see PSD 14.3>
--archiving_centre=<four digit code, see PSD 14.3>
--GIP_L2A_PB=<directory of users
choice>/L2A_PB_GIPP.xml
```

```
2018-01-29T09:18:56.395 GVA0323 001173 L2A_Logger: 89
[ INFO] logging for the main process initialized
2018-01-29T09:18:56.395 GVA0323 001173 L2A_Process:
383 [ INFO] Sentinel-2 Level 2A Processor (Sen2Cor).
Version: 2.6.0, created: 2018.01.15, supporting Level-
1C product version <= 14.3 started ...
2018-01-29T09:18:56.396 GVA0323 001173 L2A_Process:
384 [ INFO] Product version: 14.3
2018-01-29T09:18:56.396 GVA0323 001173 L2A_Process:
385 [ INFO] Operation mode: GENERATE_DATASTRIP.
2018-01-29T09:18:56.399 GVA0323 001173 L2A_Process:
398 [ INFO] Processing baseline: 02.06
2018-01-29T09:18:56.400 GVA0323 001173 L2A_ProcessDa:
210 [ INFO] Progress[%]: 0.00 : Generating datastrip
metadata
```

```

2018-01-29T09:18:56.476 GVA0323 001173 L2A_XmlParser:
109 [ INFO] validating metadata file MTD_DS.xml against
scheme
2018-01-29T09:18:56.793 GVA0323 001173 L2A_XmlParser:
115 [ INFO] metadata file is valid
2018-01-29T09:18:56.823 GVA0323 001173 L2A_ProcessDa:
255 [ INFO] datastrip directory is:
/Users/umwilm/Testdata/260_example/output/DS_XXXX_20180
129T091856_20171004T233413
2018-01-29T09:18:57.659 GVA0323 001173 L2A_XmlParser:
109 [ INFO] validating metadata file MTD_DS.xml against
scheme
2018-01-29T09:18:57.996 GVA0323 001173 L2A_XmlParser:
115 [ INFO] metadata file is valid
2018-01-29T09:18:58.013 GVA0323 001173 L2A_ProcessDa:
333 [ INFO] L1C datastrip found, L2A datastrip
successfully generated
2018-01-29T09:18:58.099 GVA0323 001173 L2A_Process:
461 [ INFO] Progress[%]: 100.00 : Application
terminated successfully.

```

- PDGS mode PROCESS_TILE:

```


L2A_Process
--mode=process_tile
--datastrip=<directory of users
choice>/DS_XXXX_20180126T081048_20171004T233413
--tile=<directory of users
choice>/L1C_T54DWM_A003030_20171004T233413
--work_dir=<directory of users choice>
--output_dir=<directory of users choice>
--GIP_L2A_PB=<directory of users
choice>/L2A_PB_GIPP.xml
--resolution=60

```

```

2018-01-29T09:05:51.912 GVA0323 001128 L2A_Logger: 89
[ INFO] logging for the main process initialized
2018-01-29T09:05:51.912 GVA0323 001128 L2A_Process:
383 [ INFO] Sentinel-2 Level 2A Processor (Sen2Cor).
Version: 2.6.0, created: 2018.01.15, supporting Level-
1C product version <= 14.3 started ...
2018-01-29T09:05:51.912 GVA0323 001128 L2A_Process:
384 [ INFO] Product version: 14.3
2018-01-29T09:05:51.914 GVA0323 001128 L2A_Process:
385 [ INFO] Operation mode: PROCESS_TILE.

```

| | | |
|---|---|--|
|  | <p>Optical MPC</p> <p>Sen2Cor 2.11.00 Software Release Note</p> | <p>Ref.: OMPC.TPZG.SRN.003 Issue: 1.0 Date: 21/11/2022 Page: 37</p> |
|---|---|--|

```

2018-01-29T09:05:52.085 GVA0323 001128 L2A_XmlParser:
109 [ INFO] validating metadata file MTD_DS.xml against
scheme
2018-01-29T09:05:52.855 GVA0323 001128 L2A_XmlParser:
115 [ INFO] metadata file is valid
2018-01-29T09:05:52.906 GVA0323 001128 L2A_Config:
3774 [ INFO] input product origins from: Sentinel-2B
...
2018-01-29T09:10:13.013 GVA0323 001128 L2A_Process:
461 [ INFO] Progress[%]: 100.00 : Application
terminated successfully.

```

3.1.16.2 Corrective Maintenance

N/A

3.1.17 Evolution since release 2.5.0

3.1.17.1 Evolutionary Updates


The following features are implemented new for release 2.5.5:

- SIIMPC-1184 Updated L2A_PB_GIPP and L2A_Config.py according to inputs from ESA
- SIIMPC-1190 Updated Look Up Tables for S2A MSI in line with S2-SRF v3.0
- SIIMPC-1184 Replaced quantification_value element in datastrip metadata by list of quantification values for each type of L2A images.
Added Auxiliary data info references for LUT, Snow climatology map, ESACCI maps (in L2A datastrip metadata)

3.1.17.2 Corrective Maintenance

The following fixes are applied to release 2.5.5:

- SIIMPC-1184
 - 1 Move the tmp folder from /tmp to AUX_DATA/tmp
 - 2 Remove the Visibility band after 10 m processing
 - 3 Updated Look Up Tables for S2A MSI in line with S2-SRF v3.0
 - 4 Fixed the fact that input Processing baseline can be lower than 2.05 for PSD 14.2
 - 5 Manifest was initialized in UTF-8, not UTF-16, corrected
 - 6 XML export: UTF-8 with xml declaration
 - 7 Packager for windows paths if using spaces

| | | |
|---|---|--|
|  | <p>Optical MPC</p> <p>Sen2Cor 2.11.00 Software Release Note</p> | <p>Ref.: OMPC.TPZG.SRN.003 Issue: 1.0 Date: 21/11/2022 Page: 38</p> |
|---|---|--|

- 8 Validation errors in dimap2A.xsd for REFERENCE_BAND and GIPP_List
- 9 10 m is not processed when all resolution is selected
- 10 Decouple version selection from processing baseline
- 11 Remove of report file from product output for PDGS mode
- 12 Unreferenced variable esacciSnowCondition when using a DEM
- 13 HPC_percentage, wrong value was set
- 14 Fixed User product ID issue with PSD 13.1 in SAFE STANDARD

3.1.18 Evolution since release 2.4.0

3.1.18.1 Evolutionary Updates

The following features are implemented new for release 2.5.0:

- SIIMPC-823 Improvement of cirrus correction: previous cirrus correction tended to an over correction which is now compensated by applying a range of gamma values equivalent to the improvements applied to ATCOR in July 2015.
- SIIMPC-892 To relate AC thresholds to an area rather than a fixed number of pixels: The implementation has invented a new configuration parameter self.config.AC_Spr_Refl_Promille, which replaces the current hard coded value of 1000 with a new configuration parameter which is now independent from pixel size: it represents the ratio between the reference pixels and the total number of non background pixels in the image, weighted with 1000 to have a suitable dimensioning between 0 and 1 for the configuration (otherwise parameter would be 0.0003). The default value is set to 0.3 which is fairly equivalent to the hardcoded value of 1000 at 60m, but is now also valid for the 20m calibration.
- SIIMPC-924 Implementation of an optional DEM output: Generation of a DEM, TCI and DDV can now be configured via thee new entries in the L2A_GIPP.xml as follows:

```

<Generate_DEM_Output>TRUE</Generate_DEM_Output>
<!-- FALSE: no DEM output, TRUE: store DEM in the AUX data directory --
>
<Generate_TCI_Output>TRUE</Generate_TCI_Output>
<!-- FALSE: no TCI output, TRUE: store TCI in the IMAGE data directory --
>
<Generate_DDV_Output>TRUE</Generate_DDV_Output>

```

<!-- FALSE: no DDV output, TRUE: store DDV in the QI_DATA data directory -->

The DDV is no official supported product and is only of interest for testing purposes of the algorithm for Aerosol Optical Thickness.

SIIMPC-934

J2K library update: the code stream parameters of the generated L2A OpenJPEG outputs have been aligned to the L1C input.

Codestream 60m:

Reference Grid Height, Width: (1830 x 1830)

Reference Tile Height, Width: (192 x 192)

Progression order: LRCP

Code block height, width: (4 x 4)

Precinct size: ((64, 64), (64, 64), (64, 64), (64, 64), (64, 64))

Codestream 20m:

Reference Grid Height, Width: (5490 x 5490)

Reference Tile Height, Width: (640 x 640)

Progression order: LRCP

Code block height, width: (8 x 8)

Precinct size: ((128, 128), (128, 128), (128, 128), (128, 128), (128, 128))

Codestream 10m:

Reference Grid Height, Width: (10980 x 10980)

Reference Tile Height, Width: (1024 x 1024)

Progression order: LRCP

Code block height, width: (64 x 64)

Precinct size: ((256, 256), (256, 256), (256, 256), (256, 256), (256, 256))

SIIMPC-942

Ozone selection based on value instead of a single character: the input of a letter for selection of an ozone value (plus profile) in the L2A_GIPP.xml input has been replaced with a direct input of an ozone value. The algorithm chooses the ozone column closest to the ozone value as specified as input. Excerpt from L2A_GIPP.xml:

```
<Aerosol_Type>AUTO</Aerosol_Type>
```

```
<!-- RURAL, MARITIME, AUTO -->
```

```
<Mid_Latitude>AUTO</Mid_Latitude>
```


```
<!-- SUMMER, WINTER, AUTO -->
```

```
<Ozone_Content>331</Ozone_Content>
```

<!-- The atmospheric temperature profile and ozone content in Dobson Unit (DU)

0: to get the best approximation from metadata

(this is the smallest difference between metadata and column DU),

| | | |
|---|---|--|
|  | <p>Optical MPC</p> <p>Sen2Cor 2.11.00 Software Release Note</p> | <p>Ref.: OMPC.TPZG.SRN.003</p> <p>Issue: 1.0</p> <p>Date: 21/11/2022</p> <p>Page: 40</p> |
|---|---|--|

else select one of:

=====

For midlatitude summer (MS) atmosphere:

250, 290, 331 (standard MS), 370, 410, 450

=====

For midlatitude winter (MW) atmosphere:

250, 290, 330, 377 (standard MW), 420, 460


=====

- SIIMPC-1017 Exclude cloud shadow pixels from Water Vapor retrieval: at cloud borders, not all pixels are correctly classified. In extreme cases this led to water vapor corrected pixels over water. This has been corrected by taking only vegetation + non_vegetated land and snow/ice pixels into account and set all other pixels to the average of water vapour.
- SIIMPC-1058 Visibility iteration extended from 80 to 120 KM: this follows an evolutionary upgrade of the ATCOR input to improve the AOT retrieval.
- SIIMPC-1107 Support for PDS 14.3: addition of the PSD 14.3 to the sen2cor internal configuration. Implementation of a version check to discriminate V 14.2 and below from Version 14.3 and applying code changes to handle the differences between PSD V.14.2 and 14.3 correctly.
- SIIMPC-1119
 - Integration into PDGS according to CCN.2 Phase A: Changes of the Interface to align Level 2A product, datastrip tile objects and metadata with the Level 1C input as specified in detail in document: S2-PDGS-MPC-L2A-PFS-V14.3, being part of this delivery.
 - Implementation of a switch to perform the generation of the L2A output in the “PDGS” mode in order to obtain maximal alignment with the Level-1C input or to generate the L2A Output in the “TOOLBOX” mode in order to warrant a downward compatibility with the previous versions for PSD V.14.2.
 - A new GIPP ‘GIP_PROBA2’ GIPP file can be provided as input to Sen2Cor as an additional optional command line argument (together with the list of other GIPPs) in order to define the processing baseline identifier of the generated L2A products. Sen2Cor is able to read this new input and use the corresponding value of the processing baseline filed in the relevant metadata and file/folder names of the L2A output product structure. In case the GIPP is not given as input, Sen2Cor uses the processing baseline identifier from the input Level-1C (in the L1C Datastrip metadata file).

The command line parameter is as follows:

Command: \$ L2A_Process --help

Output:

| | | |
|---|---|--|
|  | <p>Optical MPC</p> <p>Sen2Cor 2.11.00 Software Release Note</p> | <p>Ref.: OMPC.TPZG.SRN.003 Issue: 1.0 Date: 21/11/2022 Page: 41</p> |
|---|---|--|

```
usage: L2A_Process [-h] [--resolution {10,20,60}] [--sc_only] [--cr_only]
      [--refresh] [--GIP_L2A GIP_L2A] [--GIP_L2A_SC
      GIP_L2A_SC]
      [--GIP_L2A_AC GIP_L2A_AC] [--GIP_L2A_PB GIP_L2A_PB]
      directory
      --GIP_L2A_PB GIP_L2A_PB
      Select the processing baseline GIPP
```

SIIMPC-1146 Improvement of Cloud Screening and Scene Classification: upgrades have been performed on the Cloud Screening and Scene Classification module of Sen2Cor for the the overall accuracy of the Cloud Screening and Scene Classification (CSC) module, especially for the areas over coastal/inland/muddy waters and areas covered by snow. The improvements also focused on cirrus detection in mountainous areas and of the permanent bright targets false (cloud) detection.

3.1.18.2 Corrective Maintenance

The following fixes are applied to release 2.5.0:

SIIMPC-976 Fixes on AOT calculation: a series of fixes has been applied to improve the calculation for the Aerosol Optical Thickness.

3.1.19 Evolution since release 2.3.1

3.1.19.1 Evolutionary Updates

The following features are implemented new during the course of this release:

SIIMPC-828 The algorithm for the automatic selection of the atmosphere profile (between MidLatitude SUMMER and MidLatitude WINTER) has been improved so that it is based on latitude and date information, instead relying on AOT retrieval as it is currently implemented:

With latitude = latitude of Tile Center:

for Tropical/Equatorial areas (if latitude \in [-30; 30])

- for all year long: SUMMER


for Northern Hemisphere (if latitude \in]30; 90])

- between 1st of April and 30th of September: SUMMER
- between 1st of October and 31st of March: WINTER

for Southern Hemisphere (if latitude \in [-90; -30]).

between 1st of April and 30th of September: WINTER

- between 1st of October and 31st of March: SUMMER

| | | |
|---|---|--|
|  | <p>Optical MPC</p> <p>Sen2Cor 2.11.00 Software Release Note</p> | <p>Ref.: OMPC.TPZG.SRN.003 Issue: 1.0 Date: 21/11/2022 Page: 42</p> |
|---|---|--|

Based on this, the default configuration is now AUTO for Mid_Latitude and '0' (auto configuration) for Ozone_Content.

SIIMPC-850
(CCN.1)

This evolutionary upgrade is of primary interest for expert users of Sen2Cor for the calibration and validation activities in the context of the Mission Performance Centre (MPC):

The objective was to restructure the Sen2Cor essential calibration parameters into 3 GIPP files:

- L2A_GIPP.xml for user choices or ground segment default configuration;
- L2A_CAL_SC_GIPP.xml for Scene Classification Calibration;
- L2A_CAL_AC_GIPP.xml for Atmospheric Correction Calibration.

They shall also conform to the file naming convention applicable to S2 PDGS.

The three files suggested have a clear separation in their functionality. Whereas L2A_GIPP.xml is a pure user configuration file and in this way should be easily available for a standard user these configuration changes should be primarily performed and tested by the members of the Expert Support Laboratory. It is suggested that an option is available to select the GIPPs from command line in a form like:

```
Sen2Cor .... -GIP_L2A=" S2A_OPER_GIP_L2A____MPC.....XML" -GIP_
L2A_SC =" S2A_OPER_GIP_L2A_SC_MPC .....XML" -GIP_L2A_AC ="
S2A_OPER_GIP_L2A_AC_MPC.....XML"
```

This allows the expert user e.g. to prepare a set of GIPP file to test the processor and to select the needed GIPP to construct Sen2Cor sensitivity curve to a particular parameter.

SIIMPC-879,
889

Sen2Cor supports Sentinel-2B products in the same way as Sentinel-2A products. Implementation of a "switch" for look up table (LUT) selection ("S2A", "S2B", "AUTO"), in order to perform the Atmospheric Correction using the LUTs adapted to the MSI instruments spectral responses (i.e. S2A or S2B).

SIIMPC-963

Class names in the Sceme Classification module have been changed from "cloud_low_probability" to "unclassified", and from "bare_soil" to "not_vegetated" according to Documentation Change Request.


SIIMPC-1026

Sentinel 2B related Look up Tables for the atmospheric models have been generated and added.

3.1.19.2 Corrective Maintenance

The following fixes are applied to release 2.4.0:

| Issue | Description |
|-------|-------------|
|-------|-------------|

| | | |
|---|---|--|
|  | <p>Optical MPC</p> <p>Sen2Cor 2.11.00 Software Release Note</p> | <p>Ref.: OMPC.TPZG.SRN.003 Issue: 1.0 Date: 21/11/2022 Page: 43</p> |
|---|---|--|

- SIIMPC-793 Sen2Cor does not find a corresponding Look up Table for processing and stops the execution with an error message. This is due to a wrong initial configuration and is resolved by implementing SIIMPC-828.

- SIIMPC-802 Due to an error of non-excluding the background pixels in some cases a wrong classification was performed and a terrain correction sometimes was also performed for flat terrains.

- SIIMPC-816 If a product has 'NaN's for the Viewing_Incidence_Angles in the granule metadata, this led the atmospheric correction to fail. The fix sets the angular Values to 0 in the configuration and places a warning in the report, that these values have been reset.

- SIIMPC-897 Atmospheric correction terminates erroneously with: IndexError: index 274031 is out of bounds for axis 1 with size 1:

This issue does occur under very special conditions. These conditions have been identified and fixed.

- SIIMPC-944, Artefacts on L2A products crossing different UTM zones and international date
955 lines: DEM mosaicking was wrong in these situations and led to artefacts.

- SIIMPC-952 Path radiance rescaling: an index error in the routine for the surface reflectance calculation led to slight differences in the results between 20 and 10 m resolution for the blue and red band.

- SIIMPC-957, Visibility update should be cancelled if scene contains pure water pixels, as in
1015 these conditions no valid DDV algorithm can be performed. This issue led to two different crashes in the Atmospheric correction module which had been identified and fixed.

- SIIMPC-998 Fixed a problem occurred in the adjacency correction for tiles with a huge amount of noData pixels.

- SIIMPC-1030, For PSD Version 14.2 the L2A Manifest had not been properly updated and no
1033,1034 checksums have been displayed.

3.1.20 Evolution since release 2.3.0

Sen2Cor release 2.3.1 is a corrective maintenance upgrade based on release 2.3.0 and includes the fixes as described next. Section 3.2 lists the known open issues which will be fixed in the upcoming release 2.4.0, which is currently under preparation to be released during spring of this year.

3.1.20.1 Corrective Maintenance

The following fixes have been applied to release 2.3.1:

| Issue | Description |
|-------|-------------|
|-------|-------------|

SIIMPC-550 SRTM DEM artefacts in coastal areas: in the previous algorithm for the preparation of SRTM DEMs artefacts in coastal areas could appear. This has been improved by rearranging the processing steps.




SIIMPC-792 Error in SRTM contour lines: the problem happened for terrain with gentle slopes. Contour lines are visible because the slopes had been computed after a resampling of original DEM (90m) to 10m resolution. The elevation information was stored as integer with 1m vertical resolution which leads to some steps for gentle slopes. These steps are then interpreted as steep slopes (1 m altitude difference in 10 meter pixel ~ terrain slope of 10%) and the consequence is an artificial terrain correction due to these DEM slopes processing artefacts. The implemented solution performs a cubic spline resampling in data type float before performing the slope calculation to overcome this issue.



SIIMPC-805 Quality Indicators for cloud coverage percentage have not been properly updated in the metadata at the product level. The quality indicators on product level metadata shall give an average on all processed tiles. The calculation was incorrect due to a copy and paste error. This has been fixed.

SIIMPC-822 Under some conditions multiple entries for the B08 BAND_NAME in the metadata at 10 m resolution occur, which lead to a validation error. This has been fixed.

SIIMPC-880 If a tile contains a huge amount of water and only few parts of land, an overcorrection (black water in RGB Image) is observable (e.g.: tile

| | | |
|---|---|--|
|  | <p>Optical MPC</p> <p>Sen2Cor 2.11.00 Software Release Note</p> | <p>Ref.: OMPC.TPZG.SRN.003 Issue: 1.0 Date: 21/11/2022 Page: 45</p> |
|---|---|--|

S2A_MSIL1C_20170108T113441_N0204_R080_T29TNJ_20170108T113754). This deviation has been improved. A full resolution of this issue requires a redesign of the AOT calculation and is planned for upcoming releases and is listed in section 3.2.

SIIMPC-887 Program terminates abnormally if an SRTM DEM is not available for a selected tile (e.g.: srtm_34_04.tif). This has been corrected by continuing the execution with a flat surface instead.

SIIMPC-888 Cirrus correction was activated in the default configuration. This has been deactivated as issues with cirrus correction have been observed. These issues will be fixed in a later release as listed in section 3.2.

SIIMPC-890 Processor terminated erroneously with AttributeError: 'L2A_AtmosCorr' object has no attribute '_dn_blu_scene_av' when processing at 20 m resolution, whereas 60 m tiles are processed successfully.

Edge distortion in tiles with background pixels could lead to the execution of the DDV algorithm, although (in principle) only water and cirrus pixels had been present, as the quotient of (false classified) reference pixels vs. scene pixels (without water) was sufficient to pass the test for running the DDV. During scaling of path radiance in the 60 m case, the number of reference pixels was too small so that the algorithm terminated without changing the path radiance. In the 20 m case in contrast, the number of reference pixels was sufficient, so that the algorithm continued. However, then a condition for the initialisation of the average values for the red and blue scenes was not fulfilled, which finally led to the observed crash for 20 m. This has been solved by exiting the DDV algorithm at this stage, which leads to the same results as for the 60 m case.


3.1.21 Evolution since release 2.2.1

Sen2Cor release 2.3 is an evolutionary update on top of release 2.2.1 and implements the support of PSD 14.2 in parallel to PSD 13.1 and the corrective maintenance fixes as described below for section 3.1.19.2.

3.1.21.1 Evolutionary Updates

The following features have been implemented new during the course of this release:

| Issue | Description |
|----------------------------|---|
| SIIMPC-677 | <p>Implementation of PSD V14.2 in parallel to V13.1 with following additional features:</p> <ul style="list-style-type: none"> ❖ The product naming (including the naming of folders and files inside the product structure) has been compacted to overcome the 256 characters limitation on pathnames imposed by the Windows platforms. ❖ The products distributed on the Sentinels Data Hub will embed one single tile of the tiling grid (as opposed to a set of tiles). |

| | | |
|---|---|--|
|  | <p>Optical MPC</p> <p>Sen2Cor 2.11.00 Software Release Note</p> | <p>Ref.: OMPC.TPZG.SRN.003 Issue: 1.0 Date: 21/11/2022 Page: 46</p> |
|---|---|--|

- ❖ A full resolution True-Colour Image (TCI) will be included in every product as a separate RGB composite image (in JPEG2000 format) and will be placed inside the Tile folder together with the original spectral band images.

These features will only be active if a product with PSD V14 and above is found. The software is downward compatible to PSD V:13.1.

[SIIMPC-805](#)


A new Quality Indicator for cloud coverage percentage which is the sum of the percentages of “Cloud medium probability”, “Cloud High probability” and “Thin cirrus” is available if PSD Version is 14 and above.

Additionally a reference to the origin of the L1C input is added under L2A_Product_Info in the User Product metadata. This will only be displayed if PSD is Version 14 and above.

3.1.21.2 Corrective Maintenance

The following fixes have been applied:

| Issue | Description |
|----------------------------|---|
| SIIMPC-768 | S2Toolbox showed NAN for DN Values of 0. This occurs when negative reflectance values are clipped. Clipping has been set to 1 instead to avoid this false labelling. |
| SIIMPC-734 | New type of files in L1C products: some of the recent L1C products contained .gfs files which are geolocation header files for the masks. These files are unexpected by Sen2Cor and lead to an error at the end of the processing when creating the manifest.safe file. A patch was applied to avoid this issue. |
| SIIMPC-733 | Empty date in log file and “<>” characters: the display of an empty acquisition date and unwanted characters in the xml reports has been fixed. |
| SIIMPC-702 | Processor hangs after creating the DEM files: problems occurred during the creation of DEM files when concurrent access from different processes on the same file generated by gdalwarp occurred. This has been fixed by using the subprocess.Popen.wait() command until the gdal call which created the according file returned. |
| SIIMPC-687 | Different tilesize in converted L2A JPEG-2000 data: the tilesize for the generation of the Jp2K output files has been adapted to the parameters given for the L1C input data. |
| SIIMPC-686 | In section 3.2.1 of the SUM 2.2 still the old convention for processing is stated, which contrasts to the interface changes described for section 2.4.2. This has been aligned. |
| SIIMPC-672 | Handling of AUTO setting for Atmosphere configuration: in some cases, when no Dark Dense Vegetation reference pixels have been found in the |

| | | |
|---|---|---|
|  <p>OPT-MPC Optical Mission Performance Cluster</p> | <p>Optical MPC</p> <p>Sen2Cor 2.11.00 Software Release Note</p> | <p>Ref.: OMPC.TPZG.SRN.003 Issue: 1.0 Date: 21/11/2022 Page: 47</p> |
|---|---|---|

input data, the automated aerosol determination failed. This has been fixed in the way that the default values for SUMMER RURAL atmospheric conditions are selected, if this case occurs.

[SIIMPC-611](#)

Wrong ids of srtm files for products between 60 and 65° of latitude: there was a rounding error for calculation of the latitude and longitude values for these ranges, which has been fixed.

[SIIMPC-599](#)

Rewriting of L1C tiles metadata: the xml parser used a prettifier which failed when L1C data are blocked for writing or write protected. This has been removed so that L1C data can be read only without affecting the execution.

[SIIMPC-598](#)

Fails when user does not have write permission on the L1C: as the L2A data are copied from the L1C data, these new data are also write protected which led to an error when updating these files. L2A files properties are now recursively set to be writable for the user to avoid this error.

[SIIMPC-577](#)

SRTM georeferencing issue: Sen2Cor uses 5x5° SRTM tiles provided by CGIAR as geotiff and 1x1° PlanetDEM tiles as dted, and resamples them on the L2A product tile grid with gdalwarp. Then the DEM and the product bands are superimposed pixel to pixel. When checking the DEMs that outputs Sen2Cor on a same product, between the two different input DEMs, a half-pixel shift was discovered. This ends to a bad resampling when using SRTM DEMs. SRTM geotiff files do apparently not respect the GDAL convention that the origin should be the upper left corner of the upper left pixel. A solution was implemented in the way to rewrite the geoinformation of the geotiff file, via shifting the origin of a half pixel in the South West direction. This improved the output considerable when using the SRTM dem which is now comparable to the Planet one.

[SIIMPC-573](#)

Wrong name of dted files: Digital elevation maps for dted files have been labelled wrong as srtm due to a copy and paste error. This has been fixed.

[SIIMPC-564](#)

PlanetDEM, stripes on final products: Mosaicking and resampling routine for the treatment and generation of PlanetDems has been separated in order to avoid artefacts on generated products, which have also been observed in the surface reflectance bands.

[SIIMPC-563](#)


GdalDEM errors for planet DEM in Sen2Cor 2.2.1: the treatment of the handling of intermediate products have been corrected in order to avoid errors in the generation of the planet DEM output files.

[SIIMPC-561](#)

Problems with concurrent access on L2A GIPP Files in root installation directories: same issue as for [SIIMPC-599](#): the xml parser used a prettifier which failed when the GIPP files are blocked for writing or write protected. This has been removed so that GIPP data can be read only without affecting the execution.

[SIIMPC-558](#)

Geo-Location + Projection information embedded in JPEG2000 file: this is a major fix which was possible due to an upgrade of Glymur to 0.8.7 at the state of this release: this allows now to place the Geo-Location + Projection

| | | |
|---|---|--|
|  | <p>Optical MPC</p> <p>Sen2Cor 2.11.00 Software Release Note</p> | <p>Ref.: OMPC.TPZG.SRN.003 Issue: 1.0 Date: 21/11/2022 Page: 48</p> |
|---|---|--|

information in the same format as is used by GDAL, so that the L2A outputs are now in line with the L1C input data concerning geo referencing.

[SIIMPC-557](#)

Option to set the terrain correction ON/OFF: DEMs generated by sen2cor are used for 3 different purposes:

- ❖ the scene classification
- ❖ the retrieval of AOT and WV
- ❖ the terrain correction

As the DEMs in generally improve the quality of the output, it is in some cases desirable to deactivate the third option of terrain correction. A configuration parameter named 'Rho_Retrieval_Step2 has been added, with the two options true and false. This has for the moment only experimental status and is only available for expert users in the calibration file L2A_CAL_AC_GIPP.

[SIIMPC-556](#)

User DEM directory with read_only rights: as DTED DEMs are a commercial product, it is possible that these DEMs are located on a file server and are write protected. Thus a temporary directory was introduced for storing the intermediate products needed for creating the user DEMs, so that the source directory can be write protected. For SRTM DEMs this feature was not implemented, as here these products shall be able to be downloaded, so that the directory should not be write protected.

[SIIMPC-555](#)

Logging: Adding a timestamp to the log report filename: it is possible to generate the product multiple times for different tiles and resolutions. Thus the report file which is labelled with the product identifier was overwritten. A timestamp has been added to the report file at the time of creation. The log file will then be copied into the L2A product directory after successful processing.

[SIIMPC-554](#)

Logging: duplicated lines: duplicated lines have been observed in the report file. This has been fixed.

[SIIMPC-552](#)

Blue Path radiance rescaling routine update: Last L2A processing have shown that sometimes the Blue Path radiance rescaling routine leads to an overestimation of the blue surface reflectance (by underestimating the blue path radiance based on blue/red ratio from reference dark pixels). The implemented solution computes the mean value of the digital numbers for the whole granule in the red channel. Then all pixels are excluded as very bright surfaces which are more than 5 times larger than this mean value. This relative measure was selected because the problem was caused by adjacency correction. Adjacency correction is stronger for larger brightness differences in the image and the variable threshold adapts to the actual image.

[SIIMPC-551](#)

DEM data format in L2A AUX_DATA folder: DEMs can have negative values for land below the sea level. The problem is, that the current OpenJPEG library does not support signed integer values (Whereas Kakadu does). A selection of writing GeoTIFF instead of JPEG2000 is no alternative in terms

of filesize for the 10 m resolution DEM.

A long term solution would be to get 16-bit signed support from OpenJPEG and Glymur. The Short term solution we implemented here is adding an offset of 10.000 in order to be sure that no confusion can be made. Highest elevation value on Earth: ~8,848 m and lowest elevation value on dry land: ~ -418m, which would result in coding as 18848 and 9582 DN. This offset will also be stated in the User Manual.

[SIIMPC-550](#)

Handling of SRTM NoData values: when the SRTM CGIAR V4.0 (default dem of Sen2Cor) data is imported in Sen2Cor, the NoData pixels are read with a value of (-32768). In this SRTM dataset, the sea pixels are set to NoData. There are several problems been identified with these -32768 values:

The main problem is that there is a dem quality check in L2A_AtmosCorr that checks the peak to peak (max –min) value of the data. The resulting peak to peak value is negative and therefore the dem is judged unnecessary and not used for the Atmospheric Correction (AC).

For a correct AC on coastal areas, the dem sea pixels should be set at zero. For this a land/sea mask is used.

The implementation which was finally selected use the GDAL tools by replacing the nodata values on coastal regions with 0 before the other dem related bands are imported. So the fix occurs already on the level of the tiff input and corrects thus also the derived products for slope, aspect and shade.

3.1.21.3 Configuration Changes


The following five changes in the configuration have been applied:

| Configuration Item | Description | Value |
|---------------------|---|------------------------|
| Scaling_Limiter | limits the scaling of the path radiance for the blue channel to +/-10%. | True / false (default) |
| Scaling_Disabler | Disables the scaling of the path radiance for the blue channel. | True / false (default) |
| Rho_Retrieval_Step2 | Disables the execution of step 2 of the | true (default) / false |

As these configuration items are of experimental character they are located in the expert configuration file L2A_CAL_AC_GIPP.xml and should not be changed by standard users.

In the user configuration file L2A_GIPP.xml (located in the cfg subdirectory of the Sen2Cor home directory referenced by the \$SEN2COR_HOME environment variable) the two following changes have been applied:

| Configuration Item | Description | Value |
|--------------------|-------------|-------|
|--------------------|-------------|-------|

| | | |
|---|---|--|
|  | <p>Optical MPC</p> <p>Sen2Cor 2.11.00 Software Release Note</p> | <p>Ref.: OMPC.TPZG.SRN.003 Issue: 1.0 Date: 21/11/2022 Page: 50</p> |
|---|---|--|

| | | |
|-------------------|---|----------------|
| Visibility | Sets the visibility default value | 40.0 (default) |
| Cirrus_Correction | Cirrus correction has been activated as a default value | Yes |

3.1.22 Evolution since release 2.1.0

3.1.22.1 Evolutionary Upgrades

3.1.22.1.1 Integration of Look Up Tables for Summer / Winter / Rural and Water atmosphere

A set of 24 (LUTs) have been integrated to cover most of atmospheric conditions on Earth for the Sentinel-2 mission. In the SEN2COR context, a set of LUTs is composed by 6 or 4 LUT files depending on the total water vapor columns content of the atmosphere. Different LUTs are calculated for the mid-latitude summer and mid-latitude winter atmospheres, with 6 different (sea level) ozone contents, a rural and a maritime aerosol, 6 or 4 different sea level water vapor columns. For each supported water vapor level, the ground-to-space water vapor column depends on elevation according to the atmosphere temperature / humidity vertical profile provided. Details can be found in the user manual for SEN2COR 2.2.1.

SEN2COR LUTs are calculated for:

- ❖ 2 different types of aerosols (rural and maritime)
- ❖ 2 different types of atmospheres (Mid_Latitude SUMMER and Mid_Latitude WINTER)
- ❖ 6 different types of ozone concentrations (depending on summer or winter case)
- ❖ 6 or 4 different amounts of water vapor column (depending on summer or winter)

3.1.22.1.2 User Configuration


The LUT selection is configurable via the three entries: Aerosol_Type, Mid_Latitude and Ozone_Content in the Look_UP_Tables selection of the User Configuration file (L2A_GIPP.xml) located in the cfg directory specified by the SEN2COR_HOME environment variable. The water vapor columns are set internally.

3.1.22.1.3 Implementation of automated ozone determination

If the Ozone_Content is set to '0' by the user, it will be determined automatically by the processor. In that case, the measured ozone concentration is read from the L1C metadata and the LUT with the best fit for the measured ozone concentration is used.

3.1.22.1.4 Implementation of automated aerosol / atmosphere detection

If the Aerosol_Type and / or Mid_Latitude are set to 'AUTO' by the user, it will be determined automatically by the processor. In that case the processor will process two (aerosol only) or four test trials before the final processing of the atmospheric correction takes place. After calculation of the

| | | |
|---|---|--|
|  | <p>Optical MPC</p> <p>Sen2Cor 2.11.00 Software Release Note</p> | <p>Ref.: OMPC.TPZG.SRN.003 Issue: 1.0 Date: 21/11/2022 Page: 51</p> |
|---|---|--|

scene path radiance in the blue and red region (as total minus reflected radiance, using the average values obtained for the dark reference pixels) the ratio of $L_p(\text{blue, scene})$ to $L_p(\text{red, scene})$ can be compared to the corresponding ratio for the existing libRadtran aerosols (RURAL, MARITIME) or atmospheres (SUMMER, WINTER). The aerosol type for which the double ratio (dp) is closest to 1 is the best approximation for the scene and will be selected.

3.1.22.1.5 Improvement of the up- and down sampling routines

During the scientific evaluation campaign it has been shown, that using the previous selected methods for up and down sampling the different resolutions of the images (`scipy.ndimage.interpolation.zoom`), distortions of the colocation for equivalent pixels occurred. These routines have thus been replaced by the two routines `skimage.measure.block_reduce` for down- and `skimage.transform.resize` for up-sampling. These changes have the drawback of reducing the speed of reading of the JP2 input slightly, but improved the quality of the image data considerably.

3.1.22.1.6 Improvement of Scene Classification based on automated DEM selection

Previous releases of the processor had a tendency of false classification of water pixels inside of cloud borders and the correct discrimination between topographic and cloud shadow pixels. This has now been improved by taking the height information of an (optional) digital elevation map (DEM) as an additional input. To use this feature it is necessary to activate the reading of an appropriate DEM as is described in the User Manual.

3.1.22.2 Corrective Maintenance

3.1.22.2.1 Correction of setup routines

Upgrade to Anaconda 4.0.0 and cleanup of the dependencies to fix the issue described in: <http://forum.step.esa.int/t/sen2cor-install-error/1690/12>

3.1.22.2.2 Correction of problems with the openjpeg2 drivers on Windows

The openjpeg DLL shipped with the previous releases of sen2cor was compiled with VC++. The DLL needs `msvcr120.dll` and `msvcpr120.dll` to load properly. These two libraries are in most cases part of the windows installation under `Windows\System32`, but in some cases and some systems, they are apparently not present. The new library provides with this release was built with mingw, and has no longer any dependency to the VC++ 120 runtime dll.

3.1.23 Evolution since release 2.0.6

3.1.23.1 New Features


3.1.23.1.1 Implementation of parallelisation on tile base

SEN2COR supports now a parallel processing on tile base.

The maximum of processes can be determined via the `L2A_GIPP.xml` input configuration:

```
<Nr_Processes>AUTO</Nr_Processes>
```

`Nr_Processes` can be an unsigned integer value specifying the number or processes intended to operate in parallel or: AUTO. If AUTO is chosen, the processor determines the number of processes automatically, using the CPU info of the given architecture.

| | | |
|---|---|--|
|  | <p>Optical MPC</p> <p>Sen2Cor 2.11.00 Software Release Note</p> | <p>Ref.: OMPC.TPZG.SRN.003 Issue: 1.0 Date: 21/11/2022 Page: 52</p> |
|---|---|--|

If L2A_Process is started with a L1C User product as the given directory argument, a series of tiles will be processed in parallel, according to the given Nr. of Processes in the L2A_GIPP above. If the Nr of Processes is 1, only a sequential processing will take place as it was implemented in previous releases. Memory requirements: the atmospheric correction processing for 10m resolutions uses a huge amount of memory due to the 10.000 x 10.000 pixel for each image. Multiple images must be kept at certain intervals completely in memory for performing correlations. Thus, for each processing at 10m resolution, as a general rule of thumb, a resource of at least 4 GB of memory per process should be available. Thus, unless you have a machine with sufficient memory, leave the Nr. of processes to single processing (1), otherwise memory overflow errors will occur during processing. On a 2 Core MAC / Linux workstation with 8 GB RAM, 2,8 GHz Intel i5 and 500 GB SSD, a 4 tiles parallel processing for 10m resolution images has been successfully performed. In systems which are equipped with hard disks, however more physical memory might be needed, due to swapping effects on the hard disk.

3.1.23.1.2 Implementation of the Manifest generation for L2A User Product

Sen2cor now replaces the L1C manifest with its own L2A manifest on the User product level

3.1.23.1.3 Implementation of single tile generation

A new feature for the processing of single tiles has been added. The pathname can now either point to a L1C user product or to a single tile of the user product.

If the argument points to a user product, all tiles of the user product will be processed subsequently. If the argument points to a single tile, only that tile will be processed. In the latter case, the configuration settings for parallel processing will be ignored.

3.1.23.1.4 Relative pathname for products and single tiles

The <directory> argument of the command line can now be either a relative or an absolute pathname. If a relative pathname is given, it is expected that the user is calling sen2cor from inside a parent directory. Sen2cor will expand the absolute pathname for that directory.

Sen2cor will use the L1C user product identifier for generating a subsequent L2A product. For this purpose, the L1C source directory must start with an identifier like 'S2A_????_??_??L1C*' which is the standard, if you download a L1C user product from the Sentinel 2 data hub. The generated product will get the identifier 'S2A_????_??_??L2A*', everything else will be inherited from the L1C source.


3.1.23.1.5 Upgrade of the PSD to version 13.1

Support of the Metadata Format has been upgraded from version 12.0 to version 13.1

3.1.23.1.6 Improvements in the generation of L2A user products

The routines for generating user products of different resolutions have been decoupled and generally improved:

- ❖ SEN2COR will now also work on existing L2A user products. This allows the generation of different resolutions in subsequent steps.

| | | |
|---|---|--|
|  | <p>Optical MPC</p> <p>Sen2Cor 2.11.00 Software Release Note</p> | <p>Ref.: OMPC.TPZG.SRN.003 Issue: 1.0 Date: 21/11/2022 Page: 53</p> |
|---|---|--|

- ❖ If the user is specifying no resolution at all on the command line, all resolutions will be generated in three subsequent steps. This is the default. The selection of a 60 m resolution or 20m resolution via command line will only generate the resolution specified.
- ❖ If a resolution has already been processed for a given L2A product, sen2cor will not start a regeneration but will inform the user that this product already exists.
- ❖ The selection of a 10 m resolution requires the generation of a 20 m product. If a 20m product already exists from a previous processing, this will be taken as input, otherwise it will be generated in a first step, before the 10 m resolution product is processed. If the user wants to start from scratch, he must move, delete or rename the existing product.
- ❖ It is also possible to remove only single tiles of an existing product. These tiles will then be regenerated; the other existing tiles will be left untouched.

3.1.23.1.7 Implementation of PlanetDEM usage in parallel to CGIAR SRTM

See the section on Terrain Correction in the User Manual

3.1.23.2 Corrective Maintenance

3.1.23.2.1 L2A Processor exit conventions

In previous releases SEN2COR terminated with “TRUE”, after a successful processing. This has been changed now to return “0” for a successful processing and a value above 0 if processing errors occurred. The reasons for an unsuccessful termination can be found usually in the log file, except if a fatal error occurred which immediately killed the logging process.

3.1.23.2.2 L2A generation error if input L1C includes only 1 band


It has been observed that the processor terminated with an error when a corrupt tile with incomplete band series was found. This has been fixed in the way that the processor will terminate the generation of this specific tile, but will continue with the generation of subsequent tiles.

3.1.23.2.3 Metadata file did not pass validation

The validation of the metadata has been adapted to version PSD V 13.1 and will no longer generate errors during validation, if the input data have the correct format. A warning will only occur on the processor output, if the validation fails. If validation is successful, no output will be generated on the standard output, but only in the logfile.

3.1.23.2.4 Issue in handling consolidated tiles

It has been observed that the processor terminated with an error when a consolidated tile was found. This has been fixed. The processing of a consolidated tile however might generate a validation warning, as consolidated tiles do not follow the metadata conventions for valid tile names.

| | | |
|---|---|--|
|  | <p>Optical MPC</p> <p>Sen2Cor 2.11.00 Software Release Note</p> | <p>Ref.: OMPC.TPZG.SRN.003 Issue: 1.0 Date: 21/11/2022 Page: 54</p> |
|---|---|--|

3.1.23.2.5 Processor unable to process two (or more) data strips in one product

This has been corrected. Multiple data strips will now be processed and the metadata will be updated accordingly.

3.1.23.2.6 L2A generation error in case of black image

It has been observed that the processor terminated with an error when the image did not contain any data. The atmospheric correction cannot work on completely empty tiles. The processor will now stop the processing for the tile in question, show a corresponding warning message and will continue with the processing of the subsequent tiles.

3.1.23.2.7 Issue of DEM import when DEM support is activated

In previous releases, it occurred that a DEM was not correctly generated after download. The routines for reading a DEM have been improved with respect to parallelisation.

3.1.23.2.8 Issues reprocessing L1C product when L2A product is already present


The routines for generating user products of different resolutions have been decoupled and generally improved:

- ❖ SEN2COR will now also work on existing L2A user products. This allows the generation of different resolutions in subsequent steps.
- ❖ If the user is specifying no resolution at all on the command line, all resolutions will be generated in three subsequent steps. This is the default. The selection of a 60 m resolution or 20m resolution via command line will only generate the resolution specified.
- ❖ If a resolution has already been processed for a given L2A product, sen2cor will not start regeneration but will inform the user that this product already exists.
- ❖ The selection of a 10 m resolution requires the generation of a 20 m product. If a 20m product already exists from a previous processing, this will be taken as input, otherwise it will be generated in a first step, before the 10 m resolution product is processed. If the user wants to start from scratch, he must move, delete or rename the existing product.
- ❖ It is also possible to remove only single tiles of an existing product. These tiles will then be regenerated, the other existing tiles will be left untouched.

3.1.23.2.9 Problems with long pathnames on Windows

Windows had a path length limitation of 260 characters in the past. Unfortunately, Windows Explorer on Windows 7 x64 is still subject to this path limit. As a consequence, the very long pathnames of a typical Level-1C or Level-2A user product can sometimes not be handled correctly.

Since this release sen2cor is adapted to handle long path names on windows correctly. However there might still be problems that generated Level 2A User products (as well as the L1C input folders) cannot be removed entirely using the Windows explorer. If this is the case, the path names must be manually shortened to a length below 260 characters before removing can take place. **Please note - this is a windows limitation and not in any case related to sen2cor.**

| | | |
|---|---|--|
|  | <p>Optical MPC</p> <p>Sen2Cor 2.11.00 Software Release Note</p> | <p>Ref.: OMPC.TPZG.SRN.003 Issue: 1.0 Date: 21/11/2022 Page: 55</p> |
|---|---|--|

3.1.23.2.10 Problem with file deletion / creation at 10 m resolution

Previous releases had a problem on Windows with a file deletion at 10 m resolution if a file already existed. This has been fixed.

The fixes described above correspond to the following entries in the JIRA database:

| L2A SPR Ref. | Title |
|----------------------------|---|
| SIIMPC-334 | Update of PSD XSDs to version 13.1 for Sen2Cor 2.1.0 |
| SIIMPC-287 | L2A processor Exit Codes convention |
| SIIMPC-275 | L2A generation error if input L1C include only 1 band |
| SIIMPC-271 | [Meeting action] 20151130-DQM-12: Change request on L2A product format |
| SIIMPC-126 | [Sen2Cor] Metadata file did not pass validation running Sen2Cor |
| SIIMPC-319 | Issue on Sen2Cor in handling Consolidated Tiles |
| SIIMPC-220 | Sen2Cor is not able to process a User Product containing two (or more) datastrips |
| SIIMPC-274 | L2A generation error in case of black image |
| SIIMPC-297 | Sen2Cor: Issue of DEM import when DEM support is activated |
| SIIMPC-199 | Sen2Cor: Issue when reprocessing an L1C and L2A product is already present |
| SEN2COR-39 | Problems with long pathnames on Windows |
| SEN2COR-40 | Problem with file deletion / creation at 10 m resolution |

3.1.24 Evolution since release 2.0.5


Corrupted library for openjp2.dll on windows corrected.

Calibration factor for earth-sun-distance in reflectance to radiance conversion corrected. Radiances are computed for a fixed Earth-Sun distance of 1.0 astronomical units. This corresponds to the radiances values as stored in Sen2Cor look up tables used by the Atmospheric Correction module.

3.1.25 Evolution since release 2.0.4

A scaling problem and additionally a mismatch between the 10m resolution output and the 20 / 60 m resolution and a strong distortion in the 10 m processing has been observed in the Level 2A output images for previous releases as reported by several beta test users. This has been identified and fixed:

- ❖ increasing the input sensitivity according to a new reflectance to radiance routine to be aligned with the current inputs. This also works for the new planned 10000 scaling (instead of 1000).

| | | |
|---|---|--|
|  | <p>Optical MPC</p> <p>Sen2Cor 2.11.00 Software Release Note</p> | <p>Ref.: OMPC.TPZG.SRN.003 Issue: 1.0 Date: 21/11/2022 Page: 56</p> |
|---|---|--|

- ❖ improving the Dark Dense Vegetation classification, as the algorithm erroneously classified some water as dark pixels which then contributed to the observed distortions.

For the 60 and 20 m case, a re-scaling of the path radiance was performed if scaled path radiance for the blue band differs more than 3 % from the path radiance of the standard aerosol. This routine was only called when a visibility calculation is performed as is only the case for 60 and 20 m processing.

In the 10 m case this routine was not executed, as the visibility is resampled from 20 m. Thus, for 10 m bands the scaled path radiance for the blue band (sc_lp_blue) always remained to 1.0 due to the different treatment of the visibility calculation (see above).

These findings explain:

- ❖ 1. why the observed differences only occur in some of the images: - only if sc_lp_blue differs more than 3% from the default of 1.0, or if sufficient amount of water pixels are found, a rescaling takes place.
- ❖ 2. why the effect is stronger in some of the images: - the weight of the sc_lp_blue goes into the correction.
- ❖ 3. why the differences also occur between 60 and 20m, when the 20 m visibility was resampled from the 60 m bands instead of being calculated new.

The fixes listed above had been applied and the modified scaling for the blue channel path radiance for 20 and 60 m is stored in the configuration and is then reused for rescaling also during the 10 m processing. With this modification the results for the 10 m bands as for the 20 and 60 m are in the same range as to be expected.


New LibRadtran Look up Tables generated with the 2015 spectral response are integrated in the processor and replace the previous one.

The reflectance to radiance conversion has been updated according to a review with R. Richter. It now reflects the proper scaling of the radiance values with respect to the extra-terrestrial solar irradiance (Es). The earth sun distance factor has been removed from the conversion formula, as the TOA radiance is already aligned.

3.1.26 Evolution since release 2.0.3

The three following issues have been fixed for release 2.0.4:

| L2A SPR | TITLE | COMMENT |
|----------------------------|---|---|
| Ref. | | |
| SIIMPC-126 | Metadata file did not pass validation running Sen2Cor | the warnings concerning the metadata are now redirected in the log files and do no longer occur at the command line irritating the user. The warnings |

| | | |
|---|---|--|
|  | <p>Optical MPC</p> <p>Sen2Cor 2.11.00 Software Release Note</p> | <p>Ref.: OMPC.TPZG.SRN.003 Issue: 1.0 Date: 21/11/2022 Page: 57</p> |
|---|---|--|

itself result from an evaluation of the L1C metadata against their templates and must be fixed on the L1C metadata level.

[SIITBX-113](#) [SIIMPC-189](#) Sen2Cor has a different scaling on the L2A Output

Scaling of L2A outputs is now equivalent to L1C input and is read from the metadata instead from the L2A_GIPP file.


[SIIMPC-189](#) Size of the L2A preview file does not correspond to L1C

Is now in JP2 format and equivalent in size to the L1C input.


3.1.27 Evolution since release 1.0.1

1. The reading and writing of the metadata have been updated in order to support PFS V12.
2. A syntax checker has been implemented which test the compliance of the product metadata before and after processing.
3. The following items have been implemented according to the SPR list provided by TAS: [S2-PDGS-TS-TR-027, issue: 01, date: 19/12/2014]:

| L2A SPR Ref. | TITLE | COMMENT |
|-----------------------------|--|---|
| L2A-001 | HostedProcessor installation procedure | SUM chapter 3 to be updated with comments in the present report section 2.3 Re: Complete rework of the installation procedure. See chapter 3. |
| L2A-002 | Gdal | Delivery and version compatibility with other user software shall be clarified Re: GDAL will be installed as a conda package under the umbrella of Anaconda. No dependency to any GDAL installation outside of anaconda exists, providing that the PATH variable points to '~/.anaconda/bin'. These settings can be placed locally, in order not to interfere with any global python setup. |

| | | |
|---|---|--|
|  | <p>Optical MPC</p> <p>Sen2Cor 2.11.00 Software Release Note</p> | <p>Ref.: OMPC.TPZG.SRN.003 Issue: 1.0 Date: 21/11/2022 Page: 58</p> |
|---|---|--|

| | | |
|---------|--|---|
| L2A-003 | Anaconda | <p>Clarification on use and installation of the tools to be provided.</p> <p>Re: See chapter 3.</p> |
| L2A-004 | Pythonpath and bashrc | <p>Definition and setting procedure to be described. Launch by shell is mandatory.</p> <p>Re see chapter 3.</p> |
| L2A-005 | User and rights | <p>Procedure related to user (sometimes root) and rights for L1c data to be confirmed</p> <p>Re: no administration rights are required, if a local installation is selected as is advised in chapter 3.</p> |
| L2A-006 | Output directory | <p>Procedure to set output directory (different from input directory) to be enhanced and described.</p> <p>Re has been implemented and can be selected in the L2A_GIPP.xml processor configuration file.</p> |
| L2A-007 | Launch parameters | <p>Procedure to set parameters at launch to be enhanced and described.</p> <p>Ree see section 3.2 Operation.</p> |
| L2A-008 | Source shell is necessary in order to set environment variable for the L2A processor | <p>This is necessary in order to not modify centre user installation. This shell is updated with predefined variable during the L2A processor installation.</p> <p>See L2A_Bashrc in the sen2cor user directory.</p> |
| L2A-009 | Execution shell is needed to start L2A processor | <p>This shell a source environment shell and launch the real L2A processor (../bin/L2A_Process)</p> <p>This is a special requirement for the PDGS. For this Purpose a Script named L2A_Process.bash has been generated in the sen2cor user directory. For operations under the S2Toolbox this script is not required.</p> |

| | | |
|---|---|---|
|  <p>OPT-MPC Optical Mission Performance Cluster</p> | <p>Optical MPC</p> <p>Sen2Cor 2.11.00 Software Release Note</p> | <p>Ref.: OMPC.TPZG.SRN.003 Issue: 1.0 Date: 21/11/2022 Page: 59</p> |
|---|---|---|

| | | |
|---------|--|--|
| L2A-010 | No dependencies must be defined for the L2A installation except for already installed IPF/DPC dependencies | Fortunately, there is no problem with the delivered version because the dependencies are equal to those installed |
| L2A-011 | It is needed to change or comment the ProductionRequestParameters.xsd interface | <p>This is necessary to improve the launch of predefined version, type and options for the correct execution of the L2A processor</p> <p>Re: This information is provided by the L2A_Process.bash script. This does also contain the version number, if multiple versions of the sen2cor should be launched.</p> |
| L2A-012 | Test data rights must be correct | <p>It is necessary to change owner and rights after installation. It is also possible to indicate the command in the L2A SUM.</p> <p>Test data are provided as a zipped tar file. Unpacking is described in the SUM. Installation in the correct environments is in the responsibility of the user.</p> |
| L2A-013 | L2A SUM must indicate how to uninstall the L2A processor if needed (including Anaconda) | See chapter 3.0. |
| L2A-014 | Correct Anaconda version must be delivered with the L2A processor | <p>Delivered Anaconda version is different from the one downloaded on internet and cannot be installed.</p> <p>There are no direct requirements on the anaconda version to be used. It is suggested to install the most recent anaconda release, see section 3.1</p> |
| L2A-015 | Python installation 2.7 is needed but environment variable must be setting whit the 2.6 version | There is no need for any python environment setting, provided that the PATH includes a reference to anaconda/bin |
| L2A-016 | Update of delivery note | Minor corrections to be done in the L2A-RPDN document, regarding the version of L2A-SRN and the FTP server. |

3.2 List of Known Issues

| Issue | Description |
|-------|-------------|
|-------|-------------|

| | | |
|---|---|--|
|  | <p>Optical MPC</p> <p>Sen2Cor 2.11.00 Software Release Note</p> | <p>Ref.: OMPC.TPZG.SRN.003 Issue: 1.0 Date: 21/11/2022 Page: 61</p> |
|---|---|--|

4 Installation and Setup

This Application will support the following Operating Systems:

- **Linux (64 bit is mandatory).**
- **Windows (64 bit is mandatory).**
- **Mac: this release does not support a Mac version for Sen2Cor 2.11.00. Further updates on the availability of a Mac version will be released in the future.**

4.1 Stand-alone installers (since release 2.4.0)

The Python runtime packages of Sen2Cor will work fully autonomously and isolated and do not need any further installation of Anaconda, GDAL, OpenJPEG or any other python packages.

The installation procedure is as follows:

Download the package:

- **Sen2Cor-02.11.00-Linux64.run**
- **Sen2Cor-02.11.00-win64.zip**

From the ESA STEP website:

<http://step.esa.int/main/third-party-plugins-2/sen2cor>

On Linux: extract the compressed archive with the system command: “sh Sen2Cor-02.11.00-Linux64.run”. It will then create the folder Sen2Cor-02.11.00-Linux64. There is also an option to specify the target folder during installation time, and to give an appropriate name for the installation directory. Example for Linux, for using a different installation directory, use the --target option:

```
./ Sen2Cor-02.11.00-Linux64.run --target /tmp/ sen2cor2.11.00
```

Then, change into the directory Sen2Cor-02.11.00-Linux64 using the Linux bash shell. Confirm that Sen2Cor is correctly installed with the following command:

```
example_user@gedapv107:/home/user/bin/Sen2Cor-02.11.00-Linux64> bin/  
L2A_Process -help
```

It shall show:

```
usage: L2A_Process.py [-h] [--mode MODE] [--resolution {10,20,60}]  
  
                [--datastrip DATASTRIP] [--tile TILE]  
  
                [--output_dir OUTPUT_DIR] [--work_dir WORK_DIR]
```

```

[--img_database_dir IMG_DATABASE_DIR]

[--res_database_dir RES_DATABASE_DIR]

[--processing_centre PROCESSING_CENTRE]

[--archiving_centre ARCHIVING_CENTRE]

[--processing_baseline PROCESSING_BASELINE] [--raw]

[--tif] [--sc_only] [--sc_classic] [--sc_cog]

[--cr_only] [--debug] [--GIP_L2A GIP_L2A]

[--GIP_L2A_SC GIP_L2A_SC] [--GIP_L2A_AC GIP_L2A_AC]

[--GIP_L2A_PB GIP_L2A_PB]

input_dir

```

Sen2Cor. Version: 02.11.00, created: 2022.10.20, supporting Level-1C product

version 14.2 - 14.9.

positional arguments:

```
input_dir          Directory of Level-1C input
```

optional arguments:

```
-h, --help          show this help message and exit
```

```
--mode MODE         Mode: generate_datastrip, process_tile
```

```
--resolution {10,20,60}
```

Target resolution, can be 10, 20 or 60m. If omitted,

only 20 and 10m resolutions will be processed

```
--datastrip DATASTRIP
```

Datastrip folder

```
--tile TILE         Tile folder
```

```
--output_dir OUTPUT_DIR
```

Output directory


```
--work_dir WORK_DIR  Work directory
```

```
--img_database_dir IMG_DATABASE_DIR
```

Database directory for L1C input images

```
--res_database_dir RES_DATABASE_DIR
```

Database directory for results and temporary products

| | | |
|---|---|--|
|  | <h2 style="color: #0070C0;">Optical MPC</h2> <h3 style="color: #70AD47;">Sen2Cor 2.11.00 Software Release Note</h3> | <p>Ref.: OMPC.TPZG.SRN.003 Issue: 1.0 Date: 21/11/2022 Page: 63</p> |
|---|---|--|

```

--processing_centre PROCESSING_CENTRE

        Processing centre as regex: ^[A-Z_]{4}$, e.g "SGS_"

--archiving_centre ARCHIVING_CENTRE

        Archiving centre as regex: ^[A-Z_]{4}$, e.g. "SGS_"

--processing_baseline PROCESSING_BASELINE

        Processing baseline in the format: "dd.dd", where

        d=[0:9]

--raw

        Export raw images in rawl format with ENVI hdr

--tif

        Export raw images in TIFF format instead of JPEG-2000

--sc_only

        Performs only the scene classification at 60 or 20m

        resolution

--sc_classic

        Performs scene classification in Sen2Cor 2.9 mode

--sc_cog

        Export SCL image in COG format instead of JPEG_2000

--cr_only

        Performs only the creation of the L2A product tree, no

        processing

--debug

        Performs in debug mode

--GIP_L2A GIP_L2A

        Select the user GIPP

--GIP_L2A_SC GIP_L2A_SC

        Select the scene classification GIPP

--GIP_L2A_AC GIP_L2A_AC

        Select the atmospheric correction GIPP

--GIP_L2A_PB GIP_L2A_PB


        Select the processing baseline GIPP

```

If the processor replies as shown above, you are ready to process. Optionally you can source the script L2A_Bashrc automatically from your .bashrc or .profile, then you can call the processor directly from the directory where you host the Level-1C user products.

The configuration data of the processor are by default copied into the folder “sen2cor” inside of your home folder. **If a L2A GIPP.xml file is already present, this will not be overwritten during the installation. Please verify if this already present L2A GIPP.xml compiles with the most recent version.**


The uninstallation of the packages is simply performed by removing the folder. There are no further leftovers except the sen2cor configuration in your home folder which can also simply be removed.

| | | |
|--|--|--|
|  <p>OPT-MPC Optical Mission Performance Cluster</p> | <p>Optical MPC</p> <p>Sen2Cor 2.11.00 Software Release Note</p> | <p>Ref.: OMPC.TPZG.SRN.003 Issue: 1.0 Date: 21/11/2022 Page: 64</p> |
|--|--|--|

On Windows: extract the zipped archive with an unzip tool. This will create a folder named: Sen2Cor-02.11.00-win64. User can place the extracted folder in your user account at your choice. Then, change into the directory Sen2Cor-02.11.00-win64 using the windows command line interpreter and call the command “L2A_Process.bat –help”. It shall show a similar output as above. In that case, the software is ready to process.

The configuration data of the processor are by default copied into the folder “sen2cor” inside of your Documents folder. **If a L2A_GIPP.xml file is already present, this will not be overwritten during the installation. Please verify if this already present L2A_GIPP.xml compiles with the most recent version.**

The uninstallation of the packages is simply performed by removing the folder. There are no further leftovers except the Sen2Cor configuration in the user’s home folder which can also simply be removed.

| | | |
|---|---|--|
|  | <p>Optical MPC</p> <p>Sen2Cor 2.11.00 Software Release Note</p> | <p>Ref.: OMPC.TPZG.SRN.003 Issue: 1.0 Date: 21/11/2022 Page: 65</p> |
|---|---|--|

5 Copyright Notes

Apache License
Version 2.0, January 2004
<http://www.apache.org/licenses/>

TERMS AND CONDITIONS FOR USE, REPRODUCTION, AND DISTRIBUTION

1. Definitions.

"License" shall mean the terms and conditions for use, reproduction, and distribution as defined by Sections 1 through 9 of this document.

"Licensor" shall mean the copyright owner or entity authorized by the copyright owner that is granting the License.

"Legal Entity" shall mean the union of the acting entity and all other entities that control, are controlled by, or are under common control with that entity. For the purposes of this definition, "control" means (i) the power, direct or indirect, to cause the direction or management of such entity, whether by contract or otherwise, or (ii) ownership of fifty percent (50%) or more of the outstanding shares, or (iii) beneficial ownership of such entity.


"You" (or "Your") shall mean an individual or Legal Entity exercising permissions granted by this License.

"Source" form shall mean the preferred form for making modifications, including but not limited to software source code, documentation source, and configuration files.

"Object" form shall mean any form resulting from mechanical transformation or translation of a Source form, including but not limited to compiled object code, generated documentation, and conversions to other media types.

"Work" shall mean the work of authorship, whether in Source or Object form, made available under the License, as indicated by a copyright notice that is included in or attached to the work (an example is provided in the Appendix below).

"Derivative Works" shall mean any work, whether in Source or Object

| | | |
|---|---|--|
|  | <p>Optical MPC</p> <p>Sen2Cor 2.11.00 Software Release Note</p> | <p>Ref.: OMPC.TPZG.SRN.003</p> <p>Issue: 1.0</p> <p>Date: 21/11/2022</p> <p>Page: 66</p> |
|---|---|--|

form, that is based on (or derived from) the Work and for which the editorial revisions, annotations, elaborations, or other modifications represent, as a whole, an original work of authorship. For the purposes of this License, Derivative Works shall not include works that remain separable from, or merely link (or bind by name) to the interfaces of, the Work and Derivative Works thereof.

"Contribution" shall mean any work of authorship, including the original version of the Work and any modifications or additions to that Work or Derivative Works thereof, that is intentionally submitted to Licensor for inclusion in the Work by the copyright owner or by an individual or Legal Entity authorized to submit on behalf of the copyright owner. For the purposes of this definition, "submitted" means any form of electronic, verbal, or written communication sent to the Licensor or its representatives, including but not limited to communication on electronic mailing lists, source code control systems, and issue tracking systems that are managed by, or on behalf of, the Licensor for the purpose of discussing and improving the Work, but excluding communication that is conspicuously marked or otherwise designated in writing by the copyright owner as "Not a Contribution."

"Contributor" shall mean Licensor and any individual or Legal Entity on behalf of whom a Contribution has been received by Licensor and subsequently incorporated within the Work.

2. Grant of Copyright License. Subject to the terms and conditions of this License, each Contributor hereby grants to You a perpetual, worldwide, non-exclusive, no-charge, royalty-free, irrevocable copyright license to reproduce, prepare Derivative Works of, publicly display, publicly perform, sublicense, and distribute the Work and such Derivative Works in Source or Object form.


3. Grant of Patent License. Subject to the terms and conditions of this License, each Contributor hereby grants to You a perpetual, worldwide, non-exclusive, no-charge, royalty-free, irrevocable (except as stated in this section) patent license to make, have made, use, offer to sell, sell, import, and otherwise transfer the Work, where such license applies only to those patent claims licensable by such Contributor that are necessarily infringed by their Contribution(s) alone or by combination of their Contribution(s) with the Work to which such Contribution(s) was submitted. If You institute patent litigation against any entity (including a cross-claim or counterclaim in a lawsuit) alleging that the Work

or a Contribution incorporated within the Work constitutes direct or contributory patent infringement, then any patent licenses granted to You under this License for that Work shall terminate as of the date such litigation is filed.

4. Redistribution. You may reproduce and distribute copies of the Work or Derivative Works thereof in any medium, with or without modifications, and in Source or Object form, provided that You meet the following conditions:

- (a) You must give any other recipients of the Work or Derivative Works a copy of this License; and
- (b) You must cause any modified files to carry prominent notices stating that You changed the files; and
- (c) You must retain, in the Source form of any Derivative Works that You distribute, all copyright, patent, trademark, and attribution notices from the Source form of the Work, excluding those notices that do not pertain to any part of the Derivative Works; and
- (d) If the Work includes a "NOTICE" text file as part of its distribution, then any Derivative Works that You distribute must include a readable copy of the attribution notices contained within such NOTICE file, excluding those notices that do not pertain to any part of the Derivative Works, in at least one of the following places: within a NOTICE text file distributed as part of the Derivative Works; within the Source form or documentation, if provided along with the Derivative Works; or, within a display generated by the Derivative Works, if and wherever such third-party notices normally appear. The contents of the NOTICE file are for informational purposes only and do not modify the License. You may add Your own attribution notices within Derivative Works that You distribute, alongside or as an addendum to the NOTICE text from the Work, provided that such additional attribution notices cannot be construed as modifying the License.

You may add Your own copyright statement to Your modifications and may provide additional or different license terms and conditions for use, reproduction, or distribution of Your modifications, or for any such Derivative Works as a whole, provided Your use,

| | | |
|---|---|---|
|  <p>OPT-MPC Optical Mission Performance Cluster</p> | <p>Optical MPC</p> <p>Sen2Cor 2.11.00 Software Release Note</p> | <p>Ref.: OMPC.TPZG.SRN.003 Issue: 1.0 Date: 21/11/2022 Page: 68</p> |
|---|---|---|

reproduction, and distribution of the Work otherwise complies with the conditions stated in this License.

5. **Submission of Contributions.** Unless You explicitly state otherwise, any Contribution intentionally submitted for inclusion in the Work by You to the Licensor shall be under the terms and conditions of this License, without any additional terms or conditions.
Notwithstanding the above, nothing herein shall supersede or modify the terms of any separate license agreement you may have executed with Licensor regarding such Contributions.
6. **Trademarks.** This License does not grant permission to use the trade names, trademarks, service marks, or product names of the Licensor, except as required for reasonable and customary use in describing the origin of the Work and reproducing the content of the NOTICE file.
7. **Disclaimer of Warranty.** Unless required by applicable law or agreed to in writing, Licensor provides the Work (and each Contributor provides its Contributions) on an "AS IS" BASIS, WITHOUT WARRANTIES OR CONDITIONS OF ANY KIND, either express or implied, including, without limitation, any warranties or conditions of TITLE, NON-INFRINGEMENT, MERCHANTABILITY, or FITNESS FOR A PARTICULAR PURPOSE. You are solely responsible for determining the appropriateness of using or redistributing the Work and assume any risks associated with Your exercise of permissions under this License.
8. **Limitation of Liability.** In no event and under no legal theory, whether in tort (including negligence), contract, or otherwise, unless required by applicable law (such as deliberate and grossly negligent acts) or agreed to in writing, shall any Contributor be liable to You for damages, including any direct, indirect, special, incidental, or consequential damages of any character arising as a result of this License or out of the use or inability to use the Work (including but not limited to damages for loss of goodwill, work stoppage, computer failure or malfunction, or any and all other commercial damages or losses), even if such Contributor has been advised of the possibility of such damages.
9. **Accepting Warranty or Additional Liability.** While redistributing the Work or Derivative Works thereof, You may choose to offer, and charge a fee for, acceptance of support, warranty, indemnity, or other liability obligations and/or rights consistent with this License. However, in accepting such obligations, You may act only

on Your own behalf and on Your sole responsibility, not on behalf of any other Contributor, and only if You agree to indemnify, defend, and hold each Contributor harmless for any liability incurred by, or claims asserted against, such Contributor by reason of your accepting any such warranty or additional liability.


END OF TERMS AND CONDITIONS

Copyright 2018, ESA

Licensed under the Apache License, Version 2.0 (the "License"); you may not use this file except in compliance with the License. You may obtain a copy of the License at

<http://www.apache.org/licenses/LICENSE-2.0>

Unless required by applicable law or agreed to in writing, software distributed under the License is distributed on an "AS IS" BASIS, WITHOUT WARRANTIES OR CONDITIONS OF ANY KIND, either express or implied. See the License for the specific language governing permissions and limitations under the License.

| | | |
|---|---|--|
|  | <p>Optical MPC</p> <p>Sen2Cor 2.11.00 Software Release Note</p> | <p>Ref.: OMPC.TPZG.SRN.003</p> <p>Issue: 1.0</p> <p>Date: 21/11/2022</p> <p>Page: 70</p> |
|---|---|--|

ATCOR License Agreement


The program "ATCOR" (hereinafter called "program") is proprietary of the German Aerospace center (Deutsches Zentrum Für Luft- und Raumfahrt e.V., DLR) and is protected by the German Copyright Act. The program is made available to customer only for the purpose of use for the ESA Sentinel-2-project, the use of ATCOR for other projects is expressly excluded. With acceptance of these terms of a license the customer receives - without the right to grant sublicenses - a non exclusive, non transferable right to use the program for Sentinel-2 project. This right comprises the right to reprocess the source-code and to translate the source-code into a different programming language (hereinafter called "derived ATCOR")

Definition of the terms ATCOR sources and ATCOR binaries:

The term ATCOR sources specify the following three items: the source code of ATCOR or the source code or Python byte code of the derived ATCOR program.

The term ATCOR binaries specify a non-readable version of the derived ATCOR program. This can be either a binary executable program or an object library which is compiled from the derived ATCOR sources

The ATCOR sources may only be used for own purposes of the customer related to the Sentinel-2 project. The transfer of the ATCOR sources to third parties other than ESA and its ESA selected contractors, or the use of ATCOR sources for other projects than Sentinel-2 is subject to the prior written consent of DLR. No restrictions shall be given in the use of ATCOR binaries.

| | | |
|---|---|--|
|  | <p>Optical MPC</p> <p>Sen2Cor 2.11.00 Software Release Note</p> | <p>Ref.: OMPC.TPZG.SRN.003 Issue: 1.0 Date: 21/11/2022 Page: 71</p> |
|---|---|--|

Notice of Third Party Software Licenses

This package contains open source software binaries and or python code from external projects. These are available on an “as is” basis and subject to their individual license agreements. This package is subject to their individual licenses as well as the Sen2Cor code license. Sen2cor development team reserves the right to change which third party tools will be provided in any version of this project. Changes to license in individual packages will be updated in this file.

Sen2cor windows package contains re-distributable, run-time, shared-library files from the Intel(TM) Math Kernel Library (“MKL binaries”). You are specifically authorized to use the MKL binaries. Use and redistribution of the MKL binaries are subject to the licensing terms located at <https://software.intel.com/en-us/license/intel-simplified-software-license>. However, GNU/Linux and Apple macOS platforms are free from intel MKL binaries.

This software includes code from Python(R) project

Copyright (c) 2001, 2002, 2003, 2004, 2005, 2006 Python Software Foundation;

<http://www.python.org/>

Python(R) is a registered trademark of the Python Software Foundation.

Python is released under PSF License:

<https://docs.python.org/2/license.html>

This software includes code from open-cv2.

Copyright (c) 2016, opencv Developers

<https://pypi.org/project/opencv-python/>

Opencv is released under standart MIT Licence:

<https://github.com/opencv/opencv-python/blob/master/LICENSE.txt>

This software includes binaries from musl libc

Copyright © 2005-2014 Rich Felker, et al.

<http://www.musl-libc.org/>

Musl is released under standard MIT License:

<http://git.musl-libc.org/cgit/musl/tree/COPYRIGHT>

This software includes code from GDAL.

Copyright (c) 2000-2016, Frank Warmerdam

<http://www.gdal.org/>


GDAL is released under X11/MIT License:

<https://trac.osgeo.org/gdal/wiki/FAQGeneral#WhatlicensedoesGDALOGRuse>

This software includes code from numpy

Copyright (c) 2005, NumPy Developers

<http://www.numpy.org/>

| | | |
|---|---|--|
|  | <p>Optical MPC</p> <p>Sen2Cor 2.11.00 Software Release Note</p> | <p>Ref.: OMPC.TPZG.SRN.003 Issue: 1.0 Date: 21/11/2022 Page: 72</p> |
|---|---|--|

Numpy is released under BSD-New license:
<https://docs.scipy.org/doc/numpy-1.10.0/license.html>

This software includes code from scipy
Copyright © 2001, 2002 Enthought, Inc.
Copyright © 2003-2013 SciPy Developers.
<http://www.scipy.org/>
Scipy is released under BSD-New license:
<https://www.scipy.org/scipylib/license.html>


This software includes code from pytables
Copyright (c) 2002-2004 by Francesc Alted
Copyright (c) 2005-2007 by Carabos Coop. V.
Copyright (c) 2008-2010 by Francesc Alted
Copyright (c) 2011-2015 by PyTables maintainers
<http://www.pytables.org/>
pytables is released under BSD 3-clause "New" or "Revised" License
<https://github.com/PyTables/PyTables/blob/2.2-pro/LICENSE.txt>

This software includes code from hdf5
Copyright (c) 2006, The HDF Group.
Copyright (c) 1998-2006, The Board of Trustees of the University of Illinois.
<http://www.hdfgroup.org/>
License for hdf5 is given here:
<https://support.hdfgroup.org/products/licenses.html>

This software includes code from numexpr.
Copyright (c) 2007,2008 David M. Cooke <david.m.cooke@gmail.com>
Copyright (c) 2009,2010 Francesc Alted <faltet@pytables.org>
Copyright (c) 2011- See AUTHORS.txt
<https://github.com/pydata/numexpr>
numexpr is released under MIT License:
<https://github.com/pydata/numexpr/blob/master/LICENSE.txt>

This software includes code from lxml.
Copyright (c) 2004 Infracore. All rights reserved.
<http://lxml.de/>
lxml is released under BSD License
<https://github.com/lxml/lxml/blob/master/doc/licenses/BSD.txt>

This software includes code from psutil.
Copyright (c) 2009, Jay Loden, Dave Daeschler, Giampaolo Rodola'
<https://github.com/giampaolo/psutil>

| | | |
|---|---|--|
|  | <p>Optical MPC</p> <p>Sen2Cor 2.11.00 Software Release Note</p> | <p>Ref.: OMPC.TPZG.SRN.003 Issue: 1.0 Date: 21/11/2022 Page: 73</p> |
|---|---|--|

psutil is distributed under BSD license
<https://github.com/giampaolo/psutil/blob/master/LICENSE>

This software includes code from skimage.
Copyright (C) 2011, the scikit-image team
<http://scikit-image.org/>
skimage is released under BSD License
<http://scikit-image.org/docs/0.12.x/license.html>

This software includes code from glymur.
Copyright (C) 2013 John Evans
<https://github.com/quintusdias/glymur>
glymur is released under MIT License
<https://github.com/quintusdias/glymur/blob/master/LICENSE.txt>

This software includes code from dateutil.
Copyright (c) 2003-2011 - Gustavo Niemeyer <gustavo@niemeyer.net>
Copyright (c) 2012-2014 - Tomi Pieviläinen <tomi.pievilainen@iki.fi>
Copyright (c) 2014-2016 - Yaron de Leeuw <me@jarondl.net>
Copyright (c) 2015- - Paul Ganssle <paul@ganssle.io>
<https://github.com/dateutil/dateutil/>
dateutil is released under Simplified BSD

This software includes code from matplotlib.
Copyright (c) 2012-2013 Matplotlib Development Team
<https://matplotlib.org/>
matplotlib is released under PSF license
<https://matplotlib.org/users/license.html>

This software includes code from Python Imaging Library (PIL).
Copyright (c) 1997-2011 by Secret Labs AB
Copyright (c) 1995-2011 by Fredrik Lundh
Pillow is the friendly PIL fork. It is
Copyright (c) 2010-2017 by Alex Clark and contributors
Pillow is licensed under the open source PIL Software License:
<https://github.com/python-pillow/Pillow/blob/master/LICENSE>

This software includes code from setuptools
<https://pypi.python.org/pypi/setuptools>

This software includes code from packaging
<https://pypi.python.org/pypi/packaging>

Files:

lib/python2.7/site-packages/sen2cor/L2A_CogConverter.py
 lib/python2.7/site-packages/sen2cor/L2A_Config.py
 lib/python2.7/site-packages/sen2cor/L2A_KTL_Tracker.py
 lib/python2.7/site-packages/sen2cor/L2A_Library.py
 lib/python2.7/site-packages/sen2cor/L2A_Logger.py
 lib/python2.7/site-packages/sen2cor/L2A_Manifest.py
 lib/python2.7/site-packages/sen2cor/L2A_Process.py
 lib/python2.7/site-packages/sen2cor/L2A_ProcessDataStrip.py
 lib/python2.7/site-packages/sen2cor/L2A_ProcessTilePDGS.py
 lib/python2.7/site-packages/sen2cor/L2A_ProcessTileToolbox.py
 lib/python2.7/site-packages/sen2cor/L2A_Quality.py
 lib/python2.7/site-packages/sen2cor/L2A_SceneClass.py
 lib/python2.7/site-packages/sen2cor/L2A_SceneClass_evolution.py
 lib/python2.7/site-packages/sen2cor/L2A_Schedule.py
 lib/python2.7/site-packages/sen2cor/L2A_Tables.py
 lib/python2.7/site-packages/sen2cor/L2A_XmlParser.py
 lib/python2.7/site-packages/sen2cor/__init__.py

Copyright: Copyright (C) 2017 European Space Agency (ESA).

All Rights reserved

License: Apache 2.0

Files : lib/python2.7/site-packages/sen2cor/aux_data/

Copyright : Copyright (C) 2017 European Space Agency (ESA).

All Rights reserved

License : Apache 2.0

Files : lib/python2.7/site-packages/sen2cor/cfg/*

Copyright : Copyright (C) 2017 European Space Agency (ESA).

All Rights reserved

License : Apache 2.0

Files : lib/python2.7/site-packages/sen2cor/lib_S2A/*

Copyright : Copyright (C) 2017 European Space Agency (ESA).

All Rights reserved


License : Apache 2.0

Files : lib/python2.7/site-packages/sen2cor/lib_S2B/*

Copyright : Copyright (C) 2017 European Space Agency (ESA).

All Rights reserved

License : Apache 2.0

| | | |
|---|---|--|
|  | <p>Optical MPC</p> <p>Sen2Cor 2.11.00 Software Release Note</p> | <p>Ref.: OMPC.TPZG.SRN.003 Issue: 1.0 Date: 21/11/2022 Page: 75</p> |
|---|---|--|

See copyright/Sen2cor for full text of apache 2.0 license

Files: lib/python2.7/site-packages/sen2cor/L2A_AtMCorr.so

Copyright: German Aerospace center (Deutsches Zentrum Für Luft- und Raumfahrt e.V., DLR)

License: see copyright/ATCOR which is the license granted to ESA by DLR

This software contains binaries from lapack project.

Copyright (c) 1992-2013 The University of Tennessee and The University of Tennessee Research Foundation. All rights reserved.

Copyright (c) 2000-2013 The University of California Berkeley. All rights reserved.

Copyright (c) 2006-2013 The University of Colorado Denver. All rights reserved.

<http://www.netlib.org/>

Lapack is released under modified BSD license:

<http://www.netlib.org/lapack/LICENSE.txt>

This package contains binaries from libpng project

<http://www.libpng.org/>

libpng is distributed under libpng license

Copyright and license are listed here:

<http://www.libpng.org/pub/png/src/libpng-LICENSE.txt>

This package contains binaries from zlib project

Copyright (C) 1995-2017 Jean-loup Gailly and Mark Adler

<https://www.zlib.net/>

zlib is released under zlib license:

https://www.zlib.net/zlib_license.html

This package contains binaries from curl project

<https://curl.haxx.se>

Curl is released under MIT/X derivative license:

<https://curl.haxx.se/docs/copyright.html>

This package contains binaries from jpeg-turbo project

<http://www.libjpeg-turbo.org>

libjpeg-turbo is covered by three compatible BSD-style open source licenses:

<https://github.com/libjpeg-turbo/libjpeg-turbo/blob/master/LICENSE.md>


This package contains binaries from libxslt

<http://xmlsoft.org>

xslt is released under MIT license:

<http://xmlsoft.org/XSLT/intro.html>

This package contains binaries from libexslt

| | | |
|---|---|--|
|  | <p>Optical MPC</p> <p>Sen2Cor 2.11.00 Software Release Note</p> | <p>Ref.: OMPC.TPZG.SRN.003 Issue: 1.0 Date: 21/11/2022 Page: 76</p> |
|---|---|--|

<http://xmlsoft.org>

exslt is released under MIT license:

<http://xmlsoft.org/XSLT/EXSLT/index.html>

This package contains binaries from libxml2

<http://xmlsoft.org>

libxml2 is released under MIT license

This package contains binaries from libtiff

Copyright (c) 1988-1997 Sam Leffler

Copyright (c) 1991-1997 Silicon Graphics, Inc.

<http://www.libtiff.org/>

libtiff is released under BSD-like licence.

This package contains binaries from proj4

Copyright (c) 2000, Frank Warmerdam

proj4 is released under MIT licence:

<http://proj4.org/license.html>

This package contains binaries from libexpat

Copyright (c) 1998-2000 Thai Open Source Software Center Ltd and Clark Cooper

Copyright (c) 2001-2017 Expat maintainers

<https://libexpat.github.io/>

libexpat is released under MIT licence.

<https://github.com/libexpat/libexpat/blob/master/expat/COPYING>

This package contains binaries from Freetype2

Copyright (c) 2000, Frank Warmerdam

Freetype2 is released under FTL licence:

<http://git.savannah.gnu.org/cgit/freetype/freetype2.git/tree/docs/FTL.TXT>

This package contains binaries from libgeotiff project

libgeotiff is released under public domain or X style licence:

<https://svn.osgeo.org/metacrs/geotiff/trunk/libgeotiff/LICENSE>

This package contains binaries from SQLite project

<https://sqlite.org/>


SQLite is released under public domain

<https://sqlite.org/copyright.html>

This package contains binaries from OpenJPEG project

<http://www.openjpeg.org/>

OpenJPEG is released under 2-clause BSD license

| | | |
|---|---|--|
|  | <p>Optical MPC</p> <p>Sen2Cor 2.11.00 Software Release Note</p> | <p>Ref.: OMPC.TPZG.SRN.003 Issue: 1.0 Date: 21/11/2022 Page: 77</p> |
|---|---|--|

<https://github.com/uclouvain/openjpeg/blob/master/LICENSE>

This package contains binaries from GNU Readline project
<https://cnswww.cns.cwru.edu/php/chet/readline/rltop.html>
Readline is released under GNU GPL v3 License.
<http://www.gnu.org/licenses/gpl.html>

This package contains binaries from lcms2 project
<http://www.littlecms.com/>
lcms2 is released under MIT license

This package contains binaries from libffi project
<https://sourceware.org/libffi/>
libffi is released under MIT license
<https://github.com/libffi/libffi/blob/master/LICENSE>

This package contains binaries from ncurses project
Copyright (c) 2011-2014,2015 by Thomas E. Dickey
<https://www.gnu.org/software/ncurses/>
ncurses is distributed under MIT license
<http://invisible-island.net/ncurses/ncurses-license.html>

This package contains binaries from libssh2 project
<http://www.libssh2.org/>
ncurses is distributed under BSD license
<https://libssh2.org/license.html>

This package contains binaries from libressl project
<http://www.libressl.org/>
libressl is distributed under a mix of licenses
<https://github.com/libressl/libressl/blob/master/src/LICENSE>

This package contains binaries from gnupg project
<https://www.gnupg.org/>
gnupg is distributed under a GPL license

This package contains binaries from libbz2 project
Copyright (c) Julian Seward, jseward@bzip.org
<http://www.bzip.org/>
libbz2 is distributed under BSD license

This package contains binaries from BLAS project
<http://www.netlib.org/blas/>

| | | |
|--|---|---|
|  <p>OPT-MPC Optical Mission Performance Cluster</p> | <p style="text-align: center;">Optical MPC</p> <p style="text-align: center;">Sen2Cor 2.11.00 Software Release Note</p> | <p>Ref.: OMPC.TPZG.SRN.003 Issue: 1.0 Date: 21/11/2022 Page: 78</p> |
|--|---|---|

BLAS is distributed under public domain

This package contains binaries from OpenBLAS project

<http://www.openblas.net/>

OpenBLAS is distributed under BSD License

This package contains binaries from GDBM project

<http://www.gnu.org.ua/software/gdbm/>

GDBM is released under GPL v3 License

This software includes binaries from GCC project

Copyright (C) 2009 Free Software Foundation, Inc.

libstdc++ has GCC Runtime Library Exception:

<https://gcc.gnu.org/onlinedocs/libstdc++/manual/license.html>

The libgcc library is licensed under the GNU GPL plus the GCC Runtime Library Exception

End of document